

RECOMMENDED TRAIL ACCESSIBILITY UPGRADES FOR WINNIPEG



Wheelchair Adventures Manitoba



Accessibility Recommendations for Trails in Winnipeg

Hello, my name is George Loewen. I've always loved exploring, exercising, and being outdoors. In 2019, a mountain biking accident left me an incomplete quadriplegic, and I now use a wheelchair full-time. During recovery, I searched for accessible activities, which led me to create Wheelchair Adventures Manitoba (wheelchairmanitoba.com), a website offering resources for wheelchair users.

As I regained some mobility, I wanted to return to the trails but encountered barriers—some minor, others making it impossible to navigate with an adaptive three- or four-wheeled cycle. Having previously been active in the trail-building community, I shifted my focus to assessing accessibility on trails like the Trans Canada Trail, Fort Whyte Alive, and various Winnipeg businesses. I believe outdoor access is essential for well-being and movement.

My goal is to provide honest feedback and recommend improvements, including slope adjustments, side slope corrections, and turning radius considerations for hand cycles and quadricycles. Minor tasks like branch clearing and sand removal could be handled by volunteers, while some areas need grading, levelling, and gravel or, possibly, new trails built!

I'm grateful to have received a small Manitoba Accessibility Fund grant, which I plan to use to improve Winnipeg's trails and reduce barriers for individuals with mobility challenges. To start, I'll outline key maintenance priorities in a PowerPoint presentation. Some slides may be detailed, but they will serve as a clear starting point for accessibility improvements.

Thanks,
George Loewen

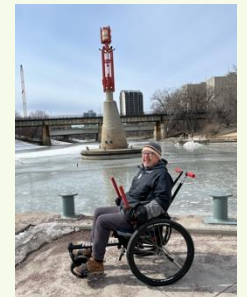
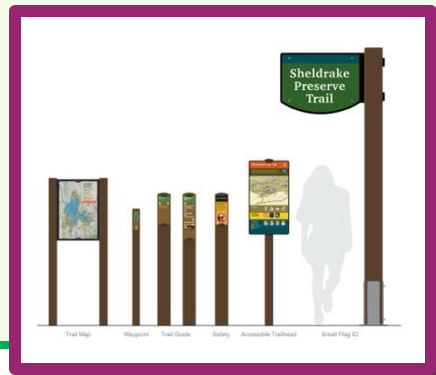
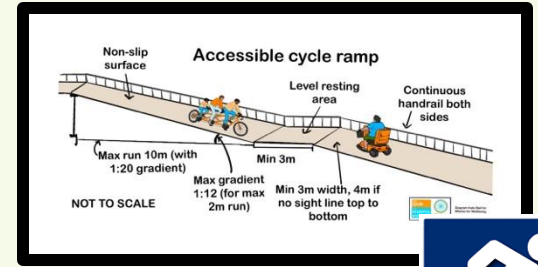


Table of Contents

<u>Cover Page</u>	11) <u>Fort Whyte Alive</u>	26) <u>Old St Boniface Route-2</u>
<u>About</u>	12) <u>Gabrielle Roy Route</u>	27) <u>Preston Trail</u>
1) <u>Accessible Trail Info</u>	13) <u>Harte Trail</u>	28) <u>Sagimay Trail</u>
2) <u>Listing of Trails</u>	14) <u>Kilcona Park</u>	29) <u>St Norbert Heritage Trails</u>
3) <u>Amber Trails</u>	15) <u>Kildonan Park Trail</u>	30) <u>Sentier Cloutier Trail</u>
4) <u>Assiniboine Park</u>	16) <u>Kings Park</u>	31) <u>South St Vital Trail</u>
5) <u>Awasisak Mēskanôw East 1</u> <u>(Bishop Grandin East)</u>	17) <u>Louis Riel Sr Trail</u>	32) <u>South Transcona Co Path</u>
6) <u>Awasisak Mēskanôw East 2</u> <u>(Bishop Grandin East)</u>	18) <u>Lyndale Drive to Egerton</u>	33) <u>South Winnipeg Parkway</u>
7) <u>Awasisak Mēskanôw West</u> <u>(Bishop Grandin West)</u>	19) <u>McGillivray Trail</u>	34) <u>Sturgeon Creek Greenway</u>
8) <u>Bois-des-esprit's Trail</u>	20) <u>Niakwa Trail-1</u>	35) <u>Transcona Trail</u>
9) <u>Bunn's Creek Trail</u>	21) <u>Niakwa Trail-2</u>	36) <u>University of Manitoba</u>
10) <u>Fermor Ave to Churchill Dr</u>	22) <u>Normand Park Trail</u>	37) <u>Yellow Ribbon Greenway</u>
	23) <u>Northeast Pioneers Greenway</u>	
	24) <u>North Winnipeg Parkway</u>	
	25) <u>Old St Boniface Route-1</u>	



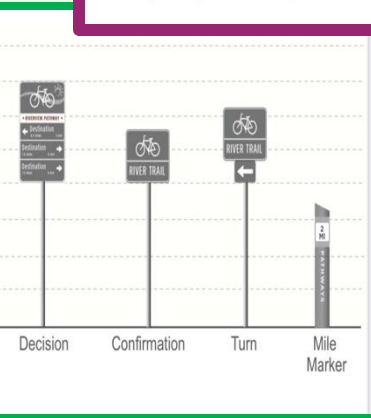
Improving crossings by cleaning up road sand, widening crosswalks and approaches, better crossing painting, and using raised pedestrian crossings if needed



Signage can greatly improve the safety as well as the user-friendly rating of a trail

Trail Information Page

Be Great to Connect as many Parks and Riverside Trails Together as we can!



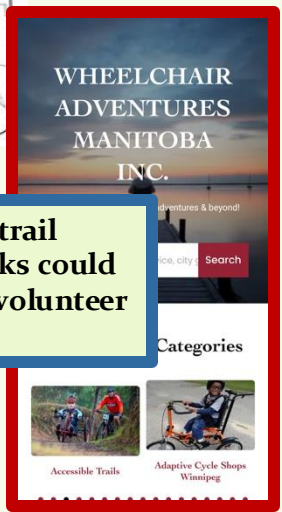
Which cycles might suit you?

The shift to more adaptive cycles is also bringing need for wider pathways, turns and crossings

There is great opportunity for our City of Winnipeg to improve an already great list of trails for all to enjoy and , in addition, once work is done, produce an 'ACCESSIBLE TRAILS IN WINNIPEG' map.



Some of the trail maintenance tasks could be performed by volunteer groups



Amber Trails

Pathways need to be added in these parks



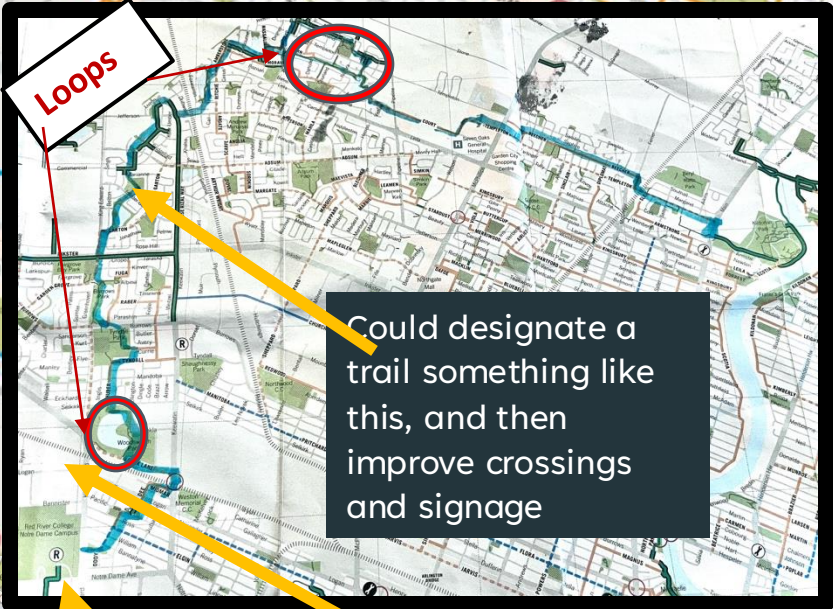
Busy intersection needs crosswalks and stop lines marked clearly

This crosswalk and sidewalk area need developing



Plant some trees

Red River College



Could designate a trail something like this, and then improve crossings and signage



This approach needs to have a better angle of sight

Parks	
Ambergate Park	
Ambergate Trail	
Amber Trail Greenspace	
Bitterfield - Dana Park	
Dana Crescent Park	
Lakebourne - Bitterfield Park	
Leila - Strasbourg Park	
Mosselle Greenspace	
Silkwood Park	

There are nine city parks in this area alone, adding to make it a great route

Kildonan Park



Main Street and Templeton intersection needs signage

Assiniboine Park

The intersection is very busy in summer. Needs to get widened and add 'yield to traffic' signage.

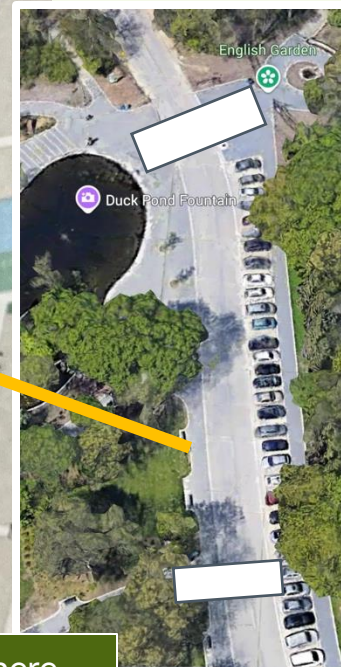
Bruce Park Bridge approach needs the slope checked



Intersection needs crosswalk painted, and wider sidewalk to the right



There needs to be another path built here to complete a loop of the park without users having to go thru parking lots or cross a busy street twice



Very busy area here should have two crosswalks marked



Awasisak Mēskanow Trail

East - 7 km

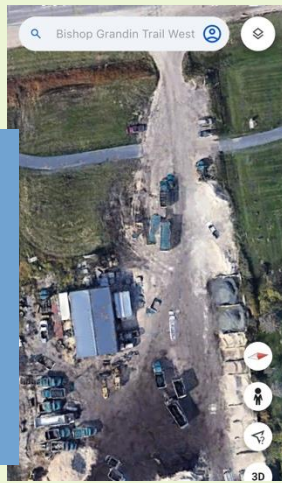
East Part 1 (Bishop Grandin East)

Northern part of the St Vital Park Loop gets flooded out. Trail can be improved by putting down some compacted rock instead of bark mulch.

Community Gardens - This long straightaway sees some fast cyclists coming through. With all the young families living close to the trail here - it would be nice to pave a separate safe area for the children to play.

This Blindspot corner could have cyclists approaching from both sides. Best to trim back the shrubbery and have a view that would be safer.

This pedestrian and cycling trail crossing should have yield signs. Could be busy with gravel trucks.



- #### Legend
- trail route
 - Bishop Grandin Greenway Trail
 - other trails
 - park / open space
 - P parking
 - W washroom / refreshments

- #### Points of Interest
- | | |
|---|--|
| 1 Fort Garry Bridge Park | 6 Eco-Education Site |
| 2 Butterfly Gardens | 7 Louis Riel Sr Route |
| 3 Fruit Orchard | 8 Bois Des Esprits Trail System |
| 4 Community Gardens | 9 Sage Creek Trail |
| 5 Public Art named 'land/mark' | |

The blind spots in these sections of trails could be made safer by maintaining pruning of the bushes.

It would be nice to have the connector trail made accessible here to St Vital Park.



Bishop Grandin Trail East - 7 km

Bishop Grandin Trail is Winnipeg's longest multi-use trail, spanning just over 12 km, and serving as an active transportation spine for south Winnipeg. The trail connects from the residential community of Sage Creek in the far east of Winnipeg, passes through many communities along the way and via connecting trails leads all the way to the community of Charleswood. Because the trail crosses over the Red River - it is often referred to as the Bishop Grandin Trail East (7 km) of the Red River and Bishop Grandin Trail West (5 km).

Bishop Grandin Greenway Trail - 4 km

Bishop Grandin Greenway Trail is more than a system of pathways - it is a network of nature areas that includes 3 retention ponds (named Aqueduct, Eagles and Nature's Haven) and public pathways that link and support human and wildlife communities. In 2000 a small group of community citizens interested in enhancing and conserving the area along Bishop Grandin Boulevard between the Red and Seine River, formed the volunteer charitable organization Bishop Grandin Greenway Inc (BGG).

Fast Facts

- Asphalt surfacing
- 7 km Distance markers installed
- Parking / Washrooms / Refreshments
 - St Vital Park - 190 River Rd
 - St Vital Shopping Centre - 1225 St Mary's Rd

Points of Interest

- | | |
|---|--|
| 1 Fort Garry Bridge Park - Located in St. Vital between the two bridge lanes, this tiny park contains two fascinating interpretive monuments that mark the completion of the Winnipeg Aqueduct and the development of Bishop Grandin Boulevard. | 5 Public art named 'land/mark' - Commissioned by the Winnipeg Arts Council, this unique interpretation of the area's history, titled 'land/mark' greets trail users as they round a bend in the trail. |
| 2 Butterfly gardens - More than 20 varieties of native plants were placed on this site in an attempt to rewild the area and to provide a habitat for several butterfly species. | 6 Eco-Education Site - This interpretive site provides an opportunity for local schools and members of the community to explore nature in an urban setting. |
| 3 Fruit orchard - Winnipeg's first public orchard has a wonderful variety of fruit trees and shrubs including: Nordland apples and Harkness cherries. | 7 Louis Riel Sr Route - An asphalt trail which is part of the Seine River Greenway system. |
| 4 Community Gardens - A partnership with St. Boniface / St. Vital Rotarians and Bishop Greenway Inc. offers area residents a chance to discover their green thumbs and grow their own produce. | 8 Bois Des Esprits Trail System - An asphalt trail which is part of the Seine River Greenway system. |
| | 9 Sage Creek Trail - A crushed stone trail that leads into the developing community of Sage Creek. |

The Winnipeg Foundation, a contributor to the quality of life in our community since 1921.

Red River Cooperative Ltd. is a proud supporter of Winnipeg trails. A Manitoba organization owned and controlled by its members, Red River Co-op is committed to working for the sustainable development of the communities it serves. www.rrocoop.com

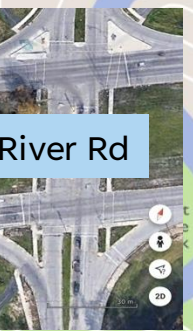
Additional information on Winnipeg trails and the Trans Canada Trail www.WinnipegTrails.com or 'Winnipeg Walks' by The Prairie Pathfinders, a Canadian best selling guide highlighting 38 walks in Winnipeg and surrounding parks - www.PrairiePathfinders.com



Dakota Avenue crossing (NW) at the St V mall. Needs bus info post moved over, bus bench moved back, and curbing beveled.

Awasisak Mēskanow Trail East Part 2

- 7 km
i(Bishop Grandin East)



River Rd



Legend

trail route

Bishop Grandin Greenway Trail

P

W



St Marys Rd



Home Depot entrance - the path should have a better angle of approach so as to safely see oncoming traffic.

Home Depot



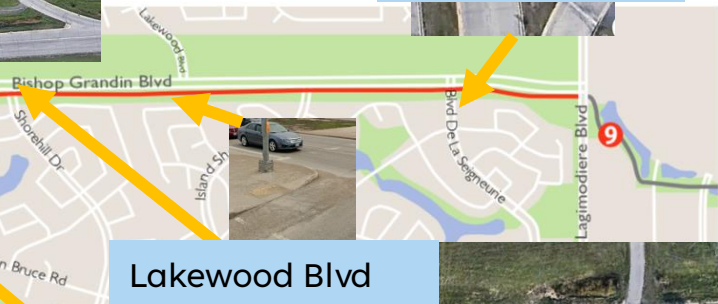
Dakota St



St. Marys Rd crossing at the St V mall. Needs bus info post moved over and curbing beveled.



De La Seigneurie



Lakewood Blvd



St Annes Rd



Shorehill Blvd



Crosswalks can be painted wide enough but the concrete approaches may be built too narrow, the sidewalk also built too narrow, and additionally, the bus info post or light may be installed as a barrier previously unseen.

8 Busy Intersections

- ☐ These on Awasisak Meskanow Trail all have one or more of the following common problems:
- ☐ Narrow sidewalks as you approach the intersections (not accessible by today's standards) .

☐ Narrow approach ramps onto traffic islands. (Too much curbing)

☐ Approach angles that don't allow adaptive cyclists to see oncoming traffic.

☐ Traffic islands that may have a bus shelter, a bus stop post, light post, or a bus bench acting as barriers.

☐ Crosswalk and traffic Island areas have excessive road sand or debris.

☐ Crosswalk markings and stop lines that are worn off.

All these types of barriers could impact persons using scooters, adaptive cycles, cargo bikes, child trailer attachments, cycling groups, etc.



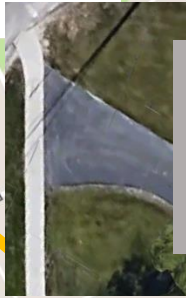
Awasisak Mēskanow Trail West

(Bishop Grandin West)

- 5 km



This sharp turn off the bridge often has loose sand and gravel, which can make it an unsafe corner – could also be widened.



Here's a good example of a turn being widened, but it goes onto a narrow sidewalk.



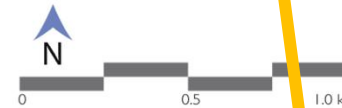
This intersection approach is too much of an angle for adaptive cycles to negotiate properly. Also, there is often a lot of loose road sand in this area.

Legend

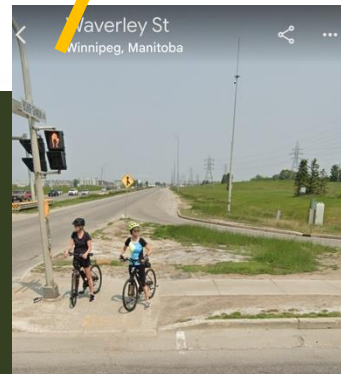
- trail route
- other trails
- park / open space
- P parking
- W washroom / refreshments

Points of Interest

- 1 McGillivray Trail
- 2 Navin Drain
- 3 Crampton's Market
- 4 Albrin Park
- 5 Bishop Grandin Trail East



At this three-way intersection, signage would be helpful.



This turn onto D'arcy could be made a little less sharp. Also, there is always sand in this area to make it even less safe..



Bishop Grandin Trail West - 5 km



Bishop Grandin Trail is Winnipeg's longest multi-use trail, spanning just over 12 km, and serving as an active transportation spine for south Winnipeg. Because the trail crosses over the Red River - it is often referred to as the Bishop Grandin Trail East (7 km) of the Red River and Bishop Grandin Trail West (5km). Bishop Grandin Trail West is also part of the Trans Canada Trail. The trail travels on top of a high berm offering a panoramic view of south Winnipeg, passes along side the residential developments of Bridgewater Forest and Whyte Ridge, alongside south Winnipeg's 'big box' shopping developments and via the McGillivray Trail - connects into FortWhyte Alive nature centre. Currently, a section of the Bishop Grandin Trail West is gravel and will be asphalted when Kenaston Blvd roadway is extended further south (~ 2012 / 2013).

Fast Facts

- asphalt surface
- 5 km route length
- Parking
 - Linden Ridge Shopping Centre on Kenaston Blvd
 - Kenaston Crossing on Kenaston Blvd
- Washroom / Convenience Store
 - Red River Co-op - 1745 Kenaston Blvd

Points of Interest

- 1 **McGillivray Trail** - a multi-use connector trail that follows McGillivray Blvd connecting Pembina Hwy to FortWhyte Alive.
- 2 **Navin Drain** - or Bishop Grandin Ditch provides fish and bird habitat.
- 3 **Crampton's Market** - at 1765 Waverley is an on-the-trail attraction with an ice cream shop, a seasonal grocery store that specializes in locally produced in-season fruit and veggies, natural meats, made in Manitoba grocery items, and an in-store bakery.
- 4 **Albrin Park** - This small children's playground park gives you a terrific view of the trail in both directions
- 5 **Bishop Grandin Trail East** - An asphalt multi-use path that follows Bishop Grandin from the Red River east to Lagimodiere Blvd.

The Winnipeg Foundation, a contributor to the quality of life in our community since 1921.



Red River Cooperative Ltd. is a proud supporter of Winnipeg trails. A Manitoba organization owned and controlled by its members. Red River Co-op is committed to working for the sustainable development of the communities it serves. www.rcoop.com



Additional information on Winnipeg trails and the Trans Canada Trail: www.WinnipegTrails.com or 'Winnipeg Walks' by The Prairie Pathfinders, a Canadian best selling guide highlighting 38 walks in Winnipeg and surrounding parks - www.PrairiePathfinders.mbs.ca



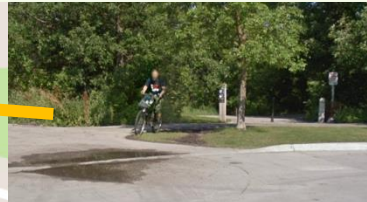
Bois-des-esprits Trail - 2 km

trailhead
needs the
concrete
approach
smoothed



Brush trim

Improvements to this
trail entrance could
include:



Repair asphalt/remove
puddle, remove curb,
add asphalt to the mud
trail area, trim
branches/make
entrance more visible
and inviting



Mowing edges
of the trail
would give 2-
way traffic
more room.

These 3 trees should be taken down for safety reasons



Bois-des-esprits Trail - 2 km

This 117 acre urban forest contains five different ecosystems - river forest, aspen forest, and grassland and is considered a vital part of the Greenway, the 'heart and lungs' of the parkway system. It is the largest remaining riverbank forest in the city and is situated on the frontline of urban sprawl. What makes it so treasured is that it is still 'virtually undisturbed'.

One special feature of the woods is a series of oxbows or abandoned riverbeds. These can be identified as U-shaped low lying areas along the trail. Oxbows were formed when a sharp bend or loop in the river eroded over time until the narrow neck of land between the two banks finally cut through creating a new straighter river channel. These abandoned river beds become highly productive riverbottom and wetland habitat supporting a rich variety of vegetation and wildlife. They are a favourite resting spot for the 20-30 whitetail deer that call the Bois home.

Fast Facts

- gravel surface
- 2.0 km route length
- Parking
 - Parking circle on west side of John Bruce Bridge
 - Extra Foods parking lot at St Anne's Rd and Southglenn Blvd
- washrooms / refreshments
 - Extra Foods on St Anne's Rd at Southglenn Blvd

Points of Interest

- 1 Louis Riel Sr Route** - An asphalt trail which is part of the Seine River Greenway system.
- 2 John Bruce Bridge** - Once a bridge for vehicular traffic, this is now a scenic foot bridge and an inviting starting point for this walk. Nearby riverbottom forest contains some of the largest trees in Winnipeg.
- 3 Woody** - This three-metre tall wood spirit guards the Bois-des-esprits forest. It was carved from a giant dead elm tree by Walter Mirosh and Robert LeClair of Les Gens de Bois and at a special aboriginal ceremony was given the name "Mhtik".
- 4 Great Grey Owl carving** - One of the many carved owls and wood spirits that you'll find along the trail. Self-taught Metis carver Murray Watson has transformed dead branches and stumps in the forest into works of art for visitors to enjoy. Join the treasure hunt in searching out these mysterious carvings hidden away in the Bois.
- 5 Royalwood Bridge** - With the encouragement of Save Our Seine the developers of Royalwood chose to build an attractive open span bridge rather than a box culvert, allowing safe paddling and winter walking beneath it no matter the season.

The Winnipeg Foundation, a contributor to the quality of life in our community since 1921.

Red River Cooperative Ltd. is a proud supporter of Winnipeg trails. A Manitoba organization owned and controlled by its members, Red River Co-op is committed to working for the sustainable development of the communities it serves. www.rcoop.com

Additional information on Winnipeg trails and the Trans Canada Trail: www.WinnipegTrails.com or 'Winnipeg Walks' by The Prairie Pathfinders, a Canadian best selling guide highlighting 38 walks in Winnipeg and surrounding parks - www.PrairiePathfinders.mb.ca



Entrance needs to be trimmed

Downslopes @ Royalwood Bridge need
some grade adjustments/switchback to
maintain the 5% grade safe for all

needs widening

Blind corner,
needs trimming

This section leading to under the
RoyalWood Bridge needs some
slope and cross slope improvements

Legend

- trail route
- other trails
- park / open space
- P parking

Points of Interest

- 1** Louis Riel Sr. Trail
- 2** John Bruce Bridge
- 3** 'Woody' a giant carved elm tree
- 4** Great grey owl forest carving
- 5** Royalwood Bridge

Bunn's Creek Trail - 3.0 km



Henderson Hwy access

Needs slope check

Crossing needs paint and repairs

Entrance needs to be widened and re-sloped

Needs safety timber edging

Trail could be made accessible to river

Needs curbing removed

Needs slope check

This turn not accessible

Make corner rounded

No crosswalk markings

No signage, make it more inviting

Bark mulch section not accessible for most wheelchairs

Only a few areas need trimming

Access points - better signage, make it more inviting

Legend

- trail route
- other trails
- Trans Canada Trail
- park / open space
- P parking
- W washroom / refreshments

- 2 Red River North Trail
- 3 Bunn's Creek Centennial Park
- 4 Northeast Pioneers Greenway
- 5 Trans Canada Trail



Bunn's Creek Trail - 3.0 km



This meandering trail follows the course of Bunn's Creek through a tight ravine. Framed with sloped embankments and shaded with a leafy canopy, the path is quiet and intimate. This is a natural parkway with wild or natural vegetation intact. It's a popular spot with birders as song birds and waterfowl are plentiful. A variety of turtles call this home and northern pike, black bullheads, white sucker and many other fish use the creek for spawning in spring.

Fast Facts

- **crushed limestone surface**
- **3.0 km route length**
- **Parking**
 - west off Henderson Hwy at Bunn's Creek
 - Bunn's Creek Centennial Park
 - Malcana Park
 - residential street parking
- **Washrooms / Refreshments**
 - Red River Co-op - 1947 Henderson Hwy

Points of Interest

- 1 **Mouth of Bunn's Creek** - A winding path takes you to forks of the Red River and Bunn's Creek. As you look west across the Red River, you see McBeth Park and a stand of Plains cottonwood that are some of the oldest native trees still remaining in the city.
- 2 **Red River North Trail** - This is part of the 110 km section of the Trans Canada Trail that travels north from Winnipeg to Lake Winnipeg and along the way passes through the towns of Birds Hill, Lockport, Selkirk, Becona, Grand Marais and Grand Beach.
- 3 **Bunn's Creek Centennial Park** - contains a large sheltered picnic area with washrooms, and a family play area. In winter, the park has a popular toboggan slide and skating rink.
- 4 **Northeast Pioneers Greenway** - This new 5.5 km asphalt trail, built on the former Marconi Spur rail line, is a popular recreation and transportation corridor.
- 5 **Trans Canada Trail** - This section of Trans Canada Trail currently follows sidewalks and city streets. Plans are underway to install a multi-use pathway in 2012.

The Winnipeg Foundation, a contributor to the quality of life in our community since 1921.

Red River Cooperative Ltd. is a proud supporter of Winnipeg trails. A Manitoba organization owned and controlled by its members, Red River Co-op is committed to working for the sustainable development of the communities it serves. www.rcoop.com

Additional information on Winnipeg trails and the Trans Canada Trail: www.WinnipegTrails.com or 'Winnipeg Walks' by The Prairie Pathfinders, a Canadian best selling guide highlighting 38 walks in Winnipeg and surrounding parks - www.PrairiePathfinders.mb.ca



FERMOR AVE to CHURCHILL DR/JUBILEE AVE

Donald riverbank trail needs cross-slope repairs

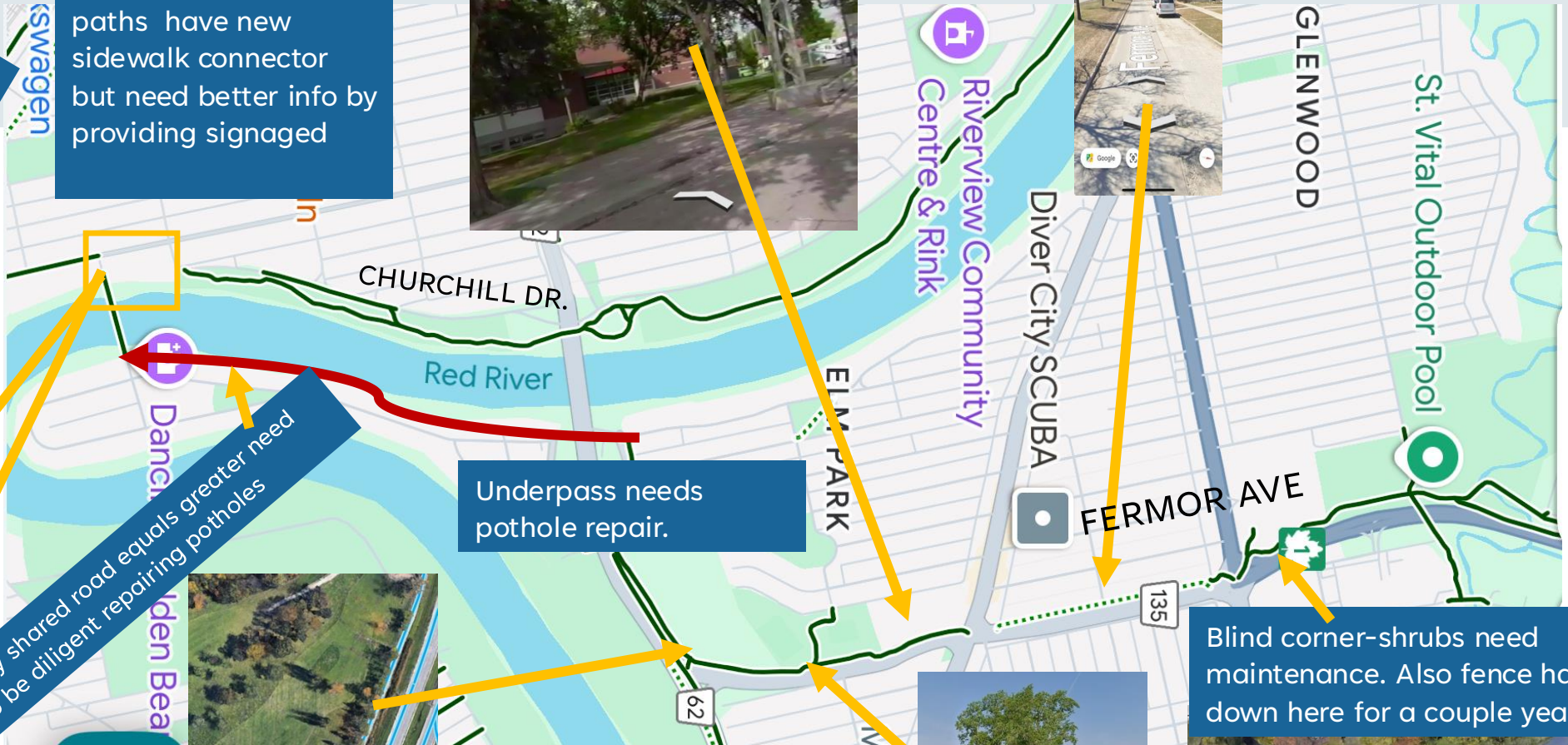
Hydro guy-wires need better marking

Shrubs need pruning

Churchill Dr to Bridge Drive-In to Jubilee Ave
> Two great cycling paths have new sidewalk connector but need better info by providing signaged

Cycling route Sidewalk in front of Glenlawn Collegiate needs to be redone

Fermor Ave side Lane is a popular connector. Needs pothole repairs.



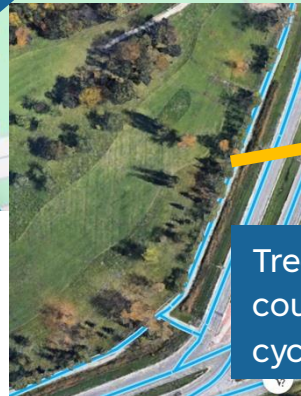
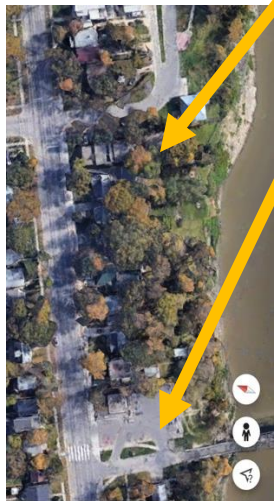
Busy shared road equals greater need to be diligent repairing potholes

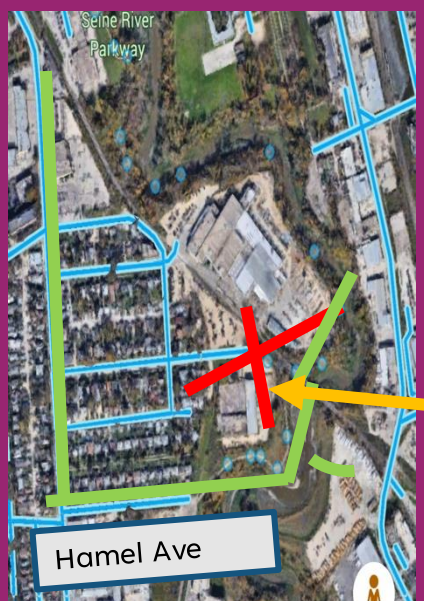
Underpass needs pothole repair.

Blind corner-shrubs need maintenance. Also fence has been down here for a couple years.

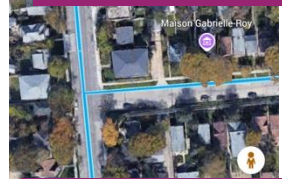
Trees from golf course growing into cycle lane

Blind corner-shrubs need maintenance.



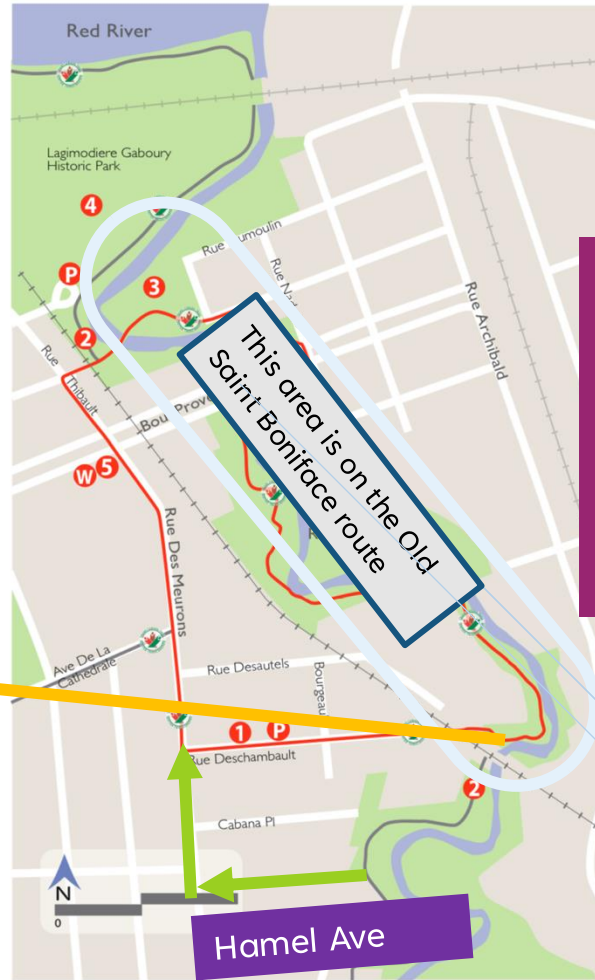


The exit for rue Deschambeault is not accessible so Hamel Avenue is the route to get back to Des Meurons.



Signage required at turns to show route

Gabrielle Roy Route - 2.6 km



Intersection across Provencher Ave should have well marked crosswalk as well as signage.



Bus stop here, sidewalk not accessible.

Legend

- trail route
- other trails
- Trans Canada Trail
- park / open space
- P parking
- W washroom / refreshments

Points of Interest

- 1 Gabrielle Roy House
- 2 Seine River Greenway Trail
- 3 Dumoulin Park
- 4 Lagimodiere Gaboury Historic Park
- 5 Franco Manitoban Centre

Gabrielle Roy Route - 2.6 km



This route in the east quarter of old St Boniface is half on sidewalks and half on the Seine River Greenway. Much of it follows the Trans Canada Trail. It is named in honour of famed author Gabrielle Roy who was born and raised in the rambling frame house at 375 Rue Deschambault. From her prairie roots, Roy became one of Canada's most prominent authors whose several books have been translated and read in all corners of the globe. Her writings span the country, but as often as not, Roy's settings and characters are the people and places she knew while growing up in Manitoba.

Fast Facts

- Combination of crushed limestone and cement sidewalk surfacing
- 2.6 km route length
- Parking
 - Lagimodiere Gaboury Historic Park parking lot
 - residential street parking
- Washrooms / Refreshments
 - Franco Manitoban Centre - 340 Provencher Blvd

Points of Interest

- 1 **Gabrielle Roy House** - 375 Rue Deschambault was home to one of Manitoba's most celebrated authors. It is now a museum, where you can tour the rooms and views made famous through her writing, including the novel Rue Deschambault (Street of Riches).
- 2 **Seine River Greenway Trail** - This crushed limestone trail is a natural recreational space for passive activities like walking and birding or canoeing, cycling, and x-country skiing. It is also a wonderful habitat to flora and fauna, and an outdoor classroom for nature and local history.
- 3 **Dumoulin Park** - An open green space adjacent to a residential area on the east side of the Seine.
- 4 **Lagimodiere Gaboury Historic Park** - This former industrial land has been transformed into a unique park with interpretive signage and an often wild, nature trail along the Red River to the confluence of the Seine River.
- 5 **Franco Manitoban Centre** - maintains, encourages, and supports all types of French language cultural activities. The Centre houses many cultural groups such as Le Cercle Molière, that contribute to the cultural and artistic vitality of the Franco-Manitoban community.

The Winnipeg Foundation, a contributor to the quality of life in our community since 1921.

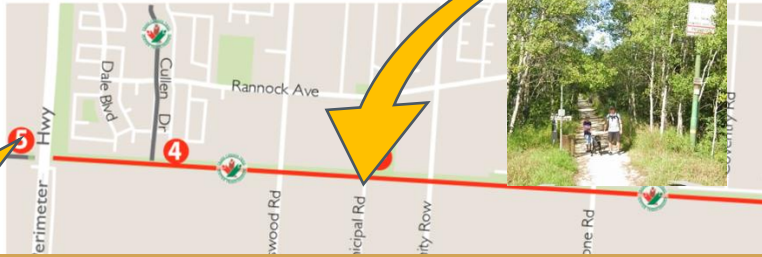
Red River Cooperative Ltd. is a proud supporter of Winnipeg trails. A Manitoba organization owned and controlled by its members, Red River Co-op is committed to working for the sustainable development of the communities it serves. www.mcoop.com

Additional information on Winnipeg trails and the Trans Canada Trail: www.WinnipegTrails.com or 'Winnipeg Walks' by The Prairie Pathfinders, a Canadian best selling guide highlighting 38 walks in Winnipeg and surrounding parks - www.PrairiePathfinders.mb.ca

Notre Dame St. entrance to the park. Needs to be cleaned up and look inviting, needs to be paved and needs signage.



Harte Trail - 6.5 km



Some intersections along the trail have stop signs, most don't. Maybe they should all have at least a yield to traffic or watch for traffic sign, even if they're given the right away.

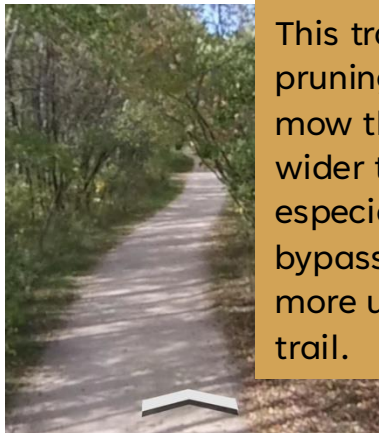
Legend

- trail route
-  Trans Canada Trail
- other trails
- park / open space
- P parking
- W washroom / refreshments

Points of Interest

- 1 Thundering Bison Trail
- 2 Preston Trail
- 3 Assiniboine Forest Trails
- 4 Van Roon Prairie Garden
- 5 Headingley Grand Trunk Trail

End of trail. Could install another bench here. Perhaps some signage.



This trail only requires a little pruning but in addition, if we can mow the sides of the trail a little wider that allows for users, especially adaptive cycle users, to bypass each other easier making it more user-friendly and accessible trail.

Minor pothole repair



Assiniboine forest, start of trail. Perhaps there should be a portable toilet here perhaps even parking space for 4 to 5 vehicles.

One of the areas along the trail where a bench could be installed.



Harte Trail - 6.5 km

This popular trail is part of the Trans Canada Trail and runs through a narrow strip of wilderness on an old railway bed. The path is intersected by half a dozen streets, and it is clear where the locals gain access, from numerous well worn footpaths meeting the trail. Its name is taken from the Harte Line, the first section of Grand Trunk Pacific Railway built in western Canada in 1894. Over the years fruit bearing shrubs, Siberian elm and other native plants have grown up as shelter. This is a perfect example of how a variety of natural growth takes over when land is left alone.

Fast Facts

- **Crushed limestone surfacing**
- **6.5 km Distance markers installed**
- **Parking**
 - Marj Edey Park – 4230 Ridgewood Ave
 - Fraser Meadow Park – Municipal Rd at Ridgewood Ave
- **Washrooms**
 - Marj Edey Park – 4230 Ridgewood Ave

Points of Interest

- 1 **Thundering Bison Trail** - Asphalt trail connecting Fort Whyte Alive, Preston Trail, Assiniboine Forest and the Harte Trail.
- 2 **Preston Trail** - Limestone trail weaves through Assiniboine Forest. Named in honor of Charleswood pioneer family.
- 3 **Assiniboine Forest Trails** - A variety of wood chip, asphalt and crushed limestone trails wind through forest, prairie and marsh in Canada's largest (280 hectare) urban nature park.
- 4 **Van Roon Prairie Garden** - Native species garden and tree area. Named in honor of long-time Charleswood residents.
- 5 **The Headingley Grand Trunk Trail** - This relatively new trail, also built on an old rail bed, leads from the Perimeter Highway out to Beaudry Park.

The Winnipeg Foundation, a contributor to the quality of life in our community since 1921.

Red River Cooperative Ltd. is a proud supporter of Winnipeg trails. A Manitoba organization owned and controlled by its members, Red River Co-op is committed to working for the sustainable development of the communities it serves. www.rccoop.com

Additional information on Winnipeg trails and the Trans Canada Trail: www.WinnipegTrails.com or 'Winnipeg Walks' by The Prairie Pathfinders, a Canadian best selling guide highlighting 38 walks in Winnipeg and surrounding parks www.PrairiePathfinders.mb.ca



Kilcona Park and Harbourview Recreation Complex

Norris Road and Springfield Road intersection needs signage and crosswalk painted



This intersection requires road sand cleaned up, crosswalks painted and signage.



Since you might encounter off leash dogs on this section of trail, you can use these other connectors to make it a longer in and out & check out some of the amenities of Harborview



This can be connector for Bunns Creek Trail (top) and also for Sunrise Trail (bottom) (need to add this connector sidewalk)



Shoulder needs to be widened.

Bridge approach needs to smoothed.

Witches Hut entrance needs to have entrance assessed.

Some sections needs to be repaved.

Crosswalk is needed here to maintain access to path.

Kildonan Park Golf Course Trail - 0.5 km



Ramp needs resting platform and slope assessment.

NEED FOR WIDER SHOULDERS



Dodging mirrors



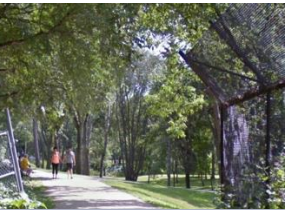
Doors opening - Shows need more need for a wider pathway.

Both these entrances need signage.



Some low lying areas are subject to standing water after big rains.

Lets bring back the old bridge.



Park entrance looks uninviting. Needs fence straightened, weeds cleaned up, and signage

Legend

- trail route
- other trails
- park / open space
- parking
- washroom / refreshments

Points of Interest

- 1 Kildonan Park
- 2 Rainbow Stage
- 3 Witch's Hut



Separate pedestrian bridge needed. Supports are already in place.

Pylons too close together for adaptive cycles.

Crowded pathway, pedestrian is forced off pavement.



Kildonan Park Golf Course Trail - 0.5 km

This is an important and scenic Trans Canada Trail link that winds along the banks of the Red River through a majestic canopy of river bottom forest. This pathway also establishes an important precedent by allowing a public trail to be built through a golf course. This is a victory for all trail users who treasure the scenic value of our city's rivers and creeks.

Fast Facts

- crushed limestone surface
- 0.5 km route length
- Parking
 - o Kildonan Park

Points of Interest

- 1 **Kildonan Park** - The many attractions of this popular park include a swimming pool, splendid flower gardens and some of the province's most ancient trees.
- 2 **The Witch's Hut** - was built in 1970 and is beloved by generations of Winnipeg children. On the outside the house resembles a gingerbread cottage. On the inside a wicked witch fattens up her captors—Hansel and Gretel. Just outside the hut is the start of a beautiful wooded path, which meanders along a lovely creek.
- 3 **Rainbow Stage** - produces full-scale Broadway-style professional musical theatre at Canada's longest-running outdoor theatre.

The Winnipeg Foundation, a contributor to the quality of life in our community since 1921.

Red River Cooperative Ltd. is a proud supporter of Winnipeg trails. A Manitoba organization owned and controlled by its members. Red River Co-op is committed to working for the sustainable development of the communities it serves. www.rccoop.com

Additional information on Winnipeg trails and the Trans Canada Trail: www.WinnipegTrails.com or 'Winnipeg Walks' by The Prairie Pathfinders, a Canadian best selling guide highlighting 38 walks in Winnipeg, and surrounding parks - www.PrairiePathfinders.mba.ca



Kings Park



The trail sidewalk ends at the car entrance to park, but should extend at least to the trail entrance (and beyond down Kilkenny Dr)

Accessible bridges (2) have been installed, but there's some lips that need grinding down



To make this trail entrance more inviting - Repair asphalt, repair sagging chains and fence posts, too much 'laws' signage, cement pad that looks like a grave?, and trees that need pruning.



Plant more trees to hide the sight of this maintenance yard



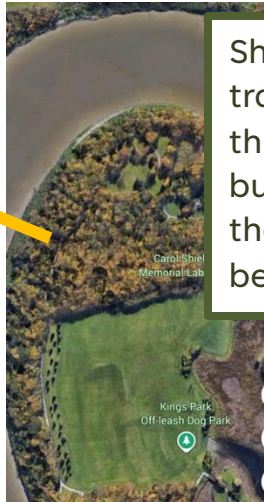
Bathrooms are not accessible



This trail entrance is too steep. Could have a slight switchback built.



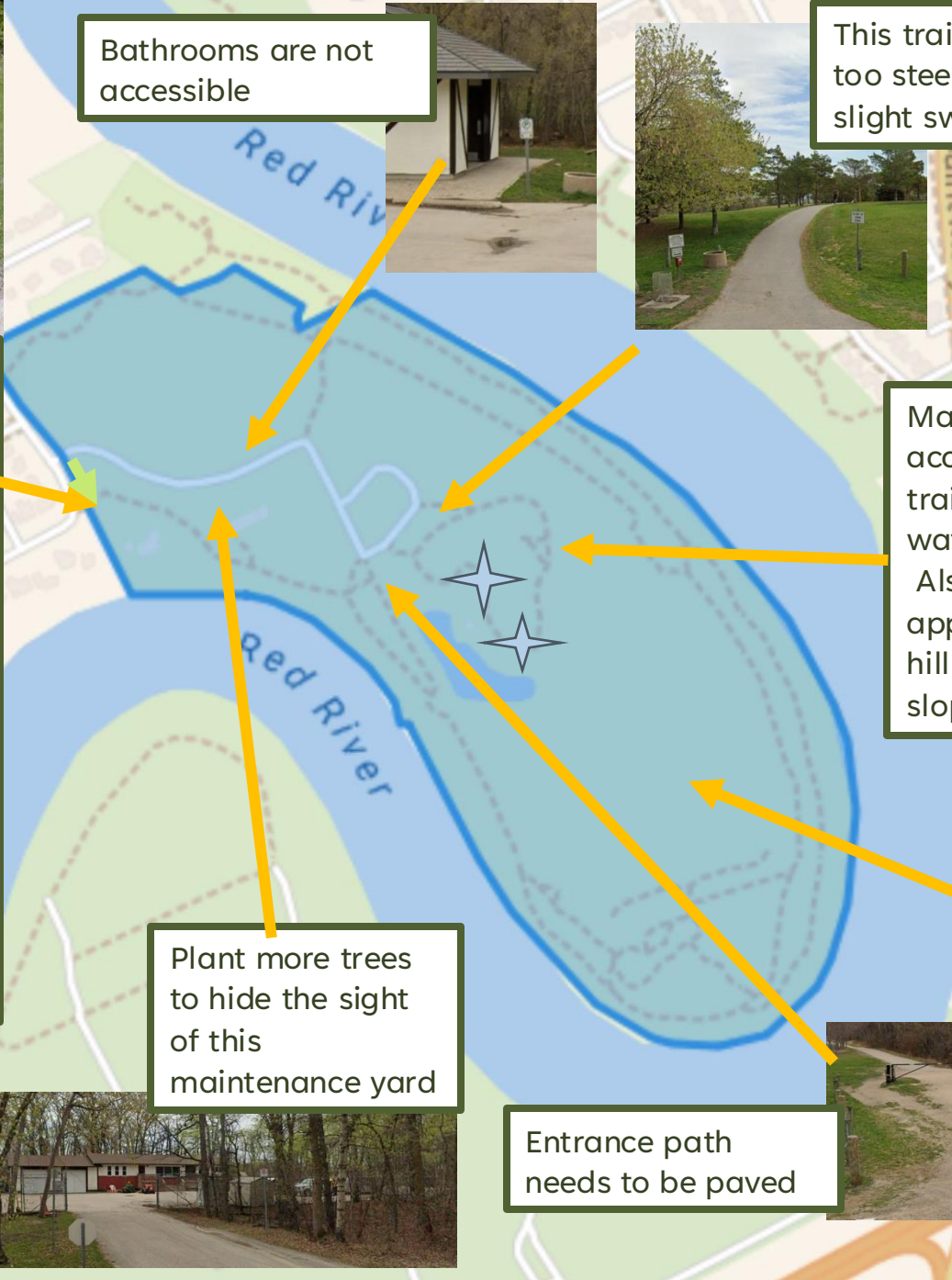
Make an accessible short trail to view the waterfall
Also, the approach to this hill needs to have slope checked.



Should add a trail loop in this beautiful bush section that would be accessible



Entrance path needs to be paved



Louis Riel Sr Trail - 0.65 km

Several areas need branches trimmed back to improve visibility and safety

Pathway to kayak launch needs to get slope measured to determine accessibility.

New asphalt needed in this area

Puddles, mud, overgrown branches, and curbing in the way

Trailhead curbing needs to be smoothed out so adaptive cycles don't tip over

Dangerous intersection on a busy trail. Left side needs a yield sign. Curves in this trail make it essential that the shrubbery be trimmed back. Also, rough payment in this area add to make it less safe.

Louis Riel Sr Trail - 0.65 km

This short pathway runs along the Seine River adjacent to the residential community of Royalwood. It is named in honour of Louis Riel Sr, the father of Louis Riel, arguably Manitoba's most famous son and perhaps the most controversial figure in Canadian historiography. Louis Riel Sr who was born at Ile-à-la-Croix in what is now Saskatchewan, moved to the Red River settlement in 1843 where he married and had eleven children of whom the eldest was Louis, the famous Métis leader. Riel Sr became well known as the 'miller of the Seine' after he established a mill on the Seine River, near St. Boniface.

Fast Facts

- **Asphalt surfacing**
- **.65 km route length**
- **Parking**
 - near the foot bridge on John Bruce Road off St Anne's Road

Points of Interest

- 1 John Bruce Road foot bridge** - Once a bridge for vehicular traffic, this is now a scenic foot bridge and an inviting starting point for this walk.
- 2 Bois des Esprits trail system** - Comprising 47 hectares, this trail winds through the largest contiguous river bottom and upland forest in Winnipeg. The parkland is diverse in habitats that support a wide range of wildlife and fish species.
- 3 Woody** - A three-metre tall "Mhtik" (wood spirit) carved from a giant elm tree, guards the Bois des Esprits forest.
- 4 Riel Mill Site** - In the 1840s, Riel Sr established a mill on this site to grind grain and card wool for the Grey Nuns of St. Boniface. Tradition has it that almost single-handedly, he dug a nine mile channel to divert water to turn the mill wheel.
- 5 Orchard Hill Park** - A manicured green space butts up against the wild native river forest vegetation of the Seine. This linear park follows the course of the river adjacent to the upscale residential neighbourhood of Royalwood.
- 6 Bishop Grandin Greenway Trail** - Extensive tree plantings, interpretive signage, eco-education and bench installations as well as a community garden make this 6 km multi-use trail a vital link to communities and amenities in southeast Winnipeg.



The Winnipeg Foundation, a contributor to the quality of life in our community since 1921.

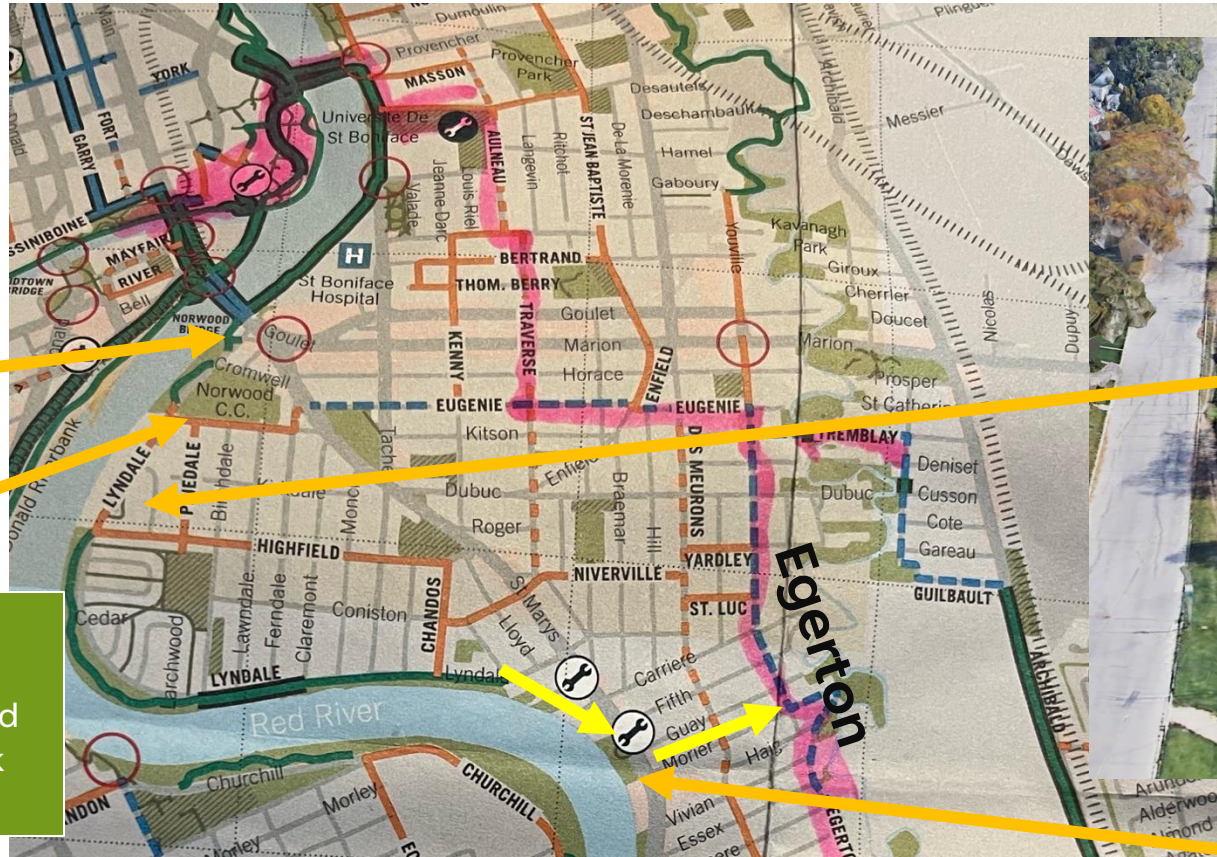
Red River Cooperative Ltd. is a proud supporter of Winnipeg trails. A Manitoba organization owned and controlled by its members, Red River Co-op is committed to working for the sustainable development of the communities it serves. www.rccoop.com

Additional information on Winnipeg trails and the Trans Canada Trail: www.WinnipegTrails.com or "Winnipeg Walks" by The Prairie Pathfinders, a Canadian best selling guide highlighting 38 walks in Winnipeg and surrounding parks - www.PrairiePathfinders.mb.ca

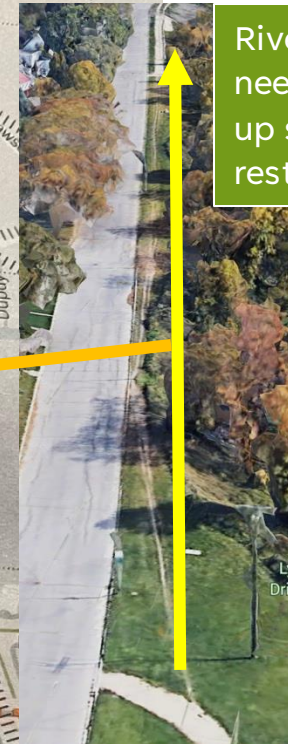


Lyndale Drive to Egerton

Winnipeg Rowing Club is on city property. Be great to have a trail along the river to join under the bridge or get them to build a nice trail around the front



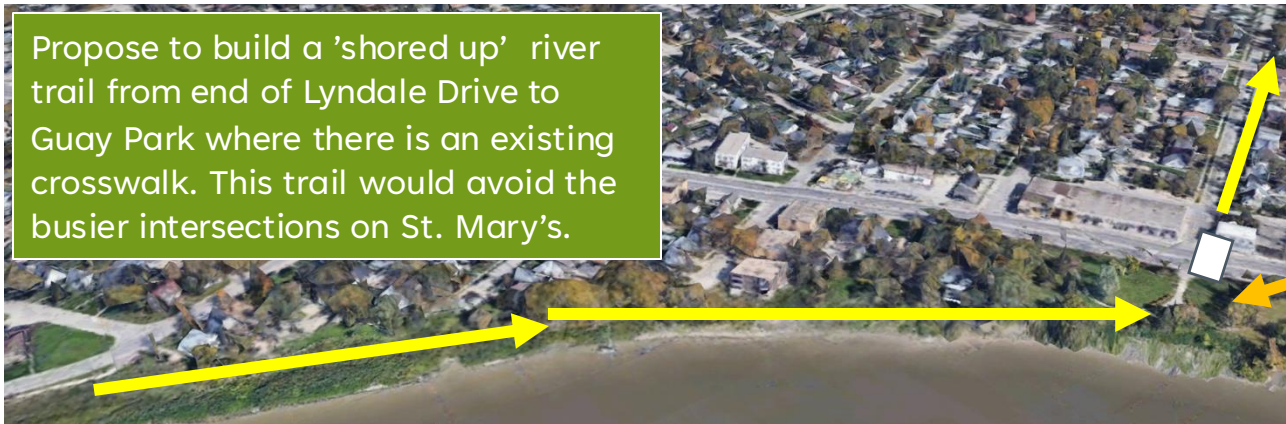
River bank here needs to be shored up so trail can be restored



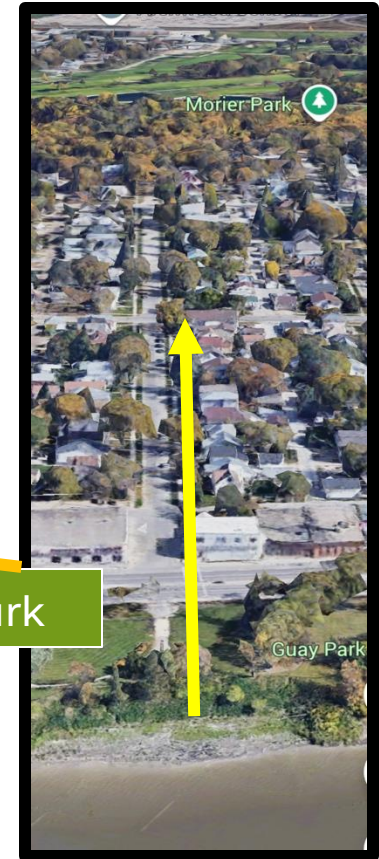
A trail entrance partial crosswalk needs to be painted so cars don't block entrance



Propose to build a 'shored up' river trail from end of Lyndale Drive to Guay Park where there is an existing crosswalk. This trail would avoid the busier intersections on St. Mary's.



Guay Park



McGillivray Trail - 5.5 km



McGillivray sidewalk cycling lane is too narrow and requires repairs to uneven surfaces.

These pathways are not wide enough for adaptive cycles to turn

Signage required both at the Dowker Ave cycling route and at MacGillivray Pembina Crossing

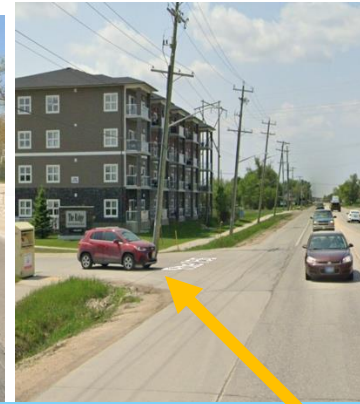
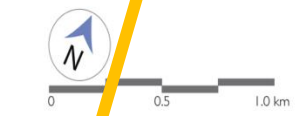
Signage needed on this pathway south of Fort Whyte Alive that goes to the Whyte Ridge C.C.

Legend

- trail route
- Trans Canada Trail
- other trails
- park / open space
- parking
- washroom / refreshments

Points of Interest

- 1 FortWhyte Alive
- 2 Bishop Grandin Trail West
- 3 Waverley Trail



Crosswalk line paintings and stop lines needed here & in many places in the city



Might be great to have a well signed & marked cycling route from McGillivray Boulevard coming through this neighbourhood on Dowker Ave for access to Crescent Drive and Churchill Drive



McGillivray Trail - 4.5 km

The McGillivray Trail is a new multi-use pathway that runs east / west connecting Pembina Hwy to FortWhyte Alive. The eastern section that borders an older residential neighbourhood is the most scenic and boasts a fine canopy of mature trees. The western section runs adjacent to Linden Woods on a nicely bermed and landscaped path before it meets up with Winnipeg's largest 'power centre' - a large collection of big box stores.

Fast Facts

- asphalt surface 3.5 metres in width
- 4.5 km route length
- Parking
 - Linden Ridge Shopping Centre on McGillivray @ Kenaston
 - Kenaston Crossing on McGillivray @ Kenaston
- Washroom / Convenience Store
 - Red River Co-op - 1745 Kenaston Blvd

Points of Interest

- 1 **FortWhyte Alive** - is a rural oasis inside the city. It offers more than 240 hectares of aspen forest, tall grass prairie, scenic lakes, hiking trails and floating marsh boardwalks. The interpretive centre includes a Touch Museum as well as the largest fresh water aquarium in Manitoba. It is also home to Winnipeg's only urban herd of bison.
- 2 **Bishop Grandin Trail West** - a new multi-use pathway that borders Bishop Grandin Blvd and Kenaston Blvd between Pembina Hwy and McGillivray Boulevard.
- 3 **Waverley Trail** - a new multi-use pathway that runs between Taylor Avenue and McGillivray Boulevard.

The Winnipeg Foundation, a contributor to the quality of life in our community since 1921.

Red River Cooperative Ltd. is a proud supporter of Winnipeg trails. A Manitoba organization owned and controlled by its members. Red River Co-op is committed to working for the sustainable development of the communities it serves. www.rrcoop.com

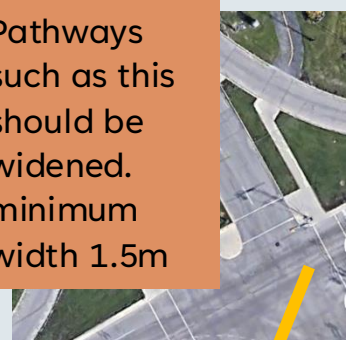
Additional information on Winnipeg trails and the Trans Canada Trail: www.WinnipegTrails.com or 'Winnipeg Walks' by The Prairie Pathfinders, a Canadian best selling guide highlighting 38 walks in Winnipeg and surrounding parks - www.PrairiePathfinders.mb.ca



This great little connector between Des Meurons and Egerton needs some cross slope grading.



Pathways such as this should be widened. minimum width 1.5m

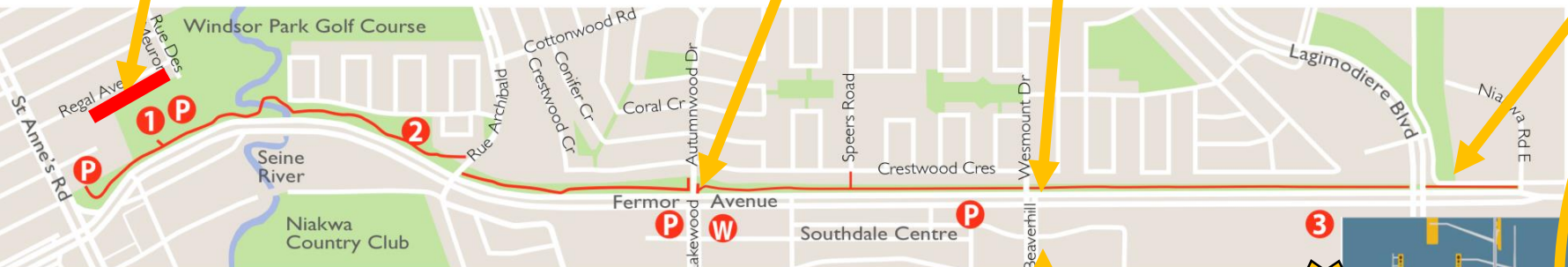


This needs a straight path to crosswalk in order to see oncoming traffic properly. Also, blindspot - needs trees trimmed

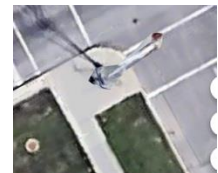
To be considered an accessible trail, traffic islands need improvements to follow specs especially along busy highway



Niakwa Trail - 4.1 km PART 1



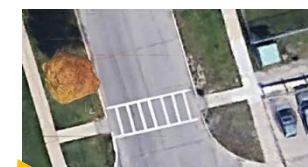
- Legend**
- trail route
 - park / open space
 - P parking
 - W washroom / refreshments



BEST



- Points of Interest**
- 1 King George Park
 - 2 Papoose Park
 - 3 Royal Canadian Mint

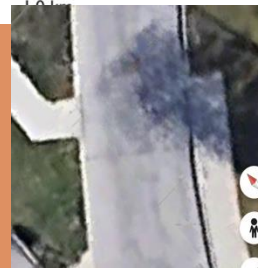


Shamrock School

BEST



Busy highway merge. Sidewalk turn needs to be widened so an adaptive cyclist can see oncoming traffic.



Niakwa Trail - 4.1 km
 Named after the residential community of Niakwa, this pathway follows the north side of Fermor Avenue between St. Anne's Road and Niakwa Road East. This popular multi-use trail is an important pedestrian and cyclist corridor and provides a vital link to communities and amenities.

- Fast Facts**
- Asphalt surfacing
 - 4.1 km Distance markers installed
 - Parking
 - Superstore
 - King George Park
 - Southdale Shopping Centre
- Points of Interest**
- 1 King George Park - Located at the south end of Des Meurons this small recreational park contains a lovely children's play ground as well as a baseball diamond and outdoor swimming pool.
 - 2 Papoose Park - This nicely treed strip of linear park features a very picturesque foot bridge over the Seine River.
 - 3 Royal Canadian Mint - This eye-catching architecture houses a very high-tech, high-volume manufacturing facility. Every single Canadian circulation coin is produced here - literally billions each year. Established in 1976, this plant occupies a 14,864 m2 state-of-the-art facility.



The Winnipeg Foundation, a contributor to the quality of life in our community since 1921.

Red River Cooperative Ltd. is a proud supporter of Winnipeg trails. A Manitoba organization owned and controlled by its members, Red River Co-op is committed to working for the sustainable development of the communities it serves. www.rccoop.com

Additional information on Winnipeg trails and the Trans Canada Trail www.VivWinnipegTrails.com or "Winnipeg Walks" by The Prairie Pathfinders, a Canadian best selling guide highlighting 36 walks in Winnipeg and surrounding parks - www.PrairiePathfinders.mbc.ca

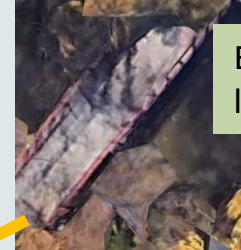




This bus bench could be turned, and the recycling bin could be removed from traffic Island so as to not obstruct vision of oncoming traffic for children and recumbent cyclists



This busy crossing area needs some yield signs north and south



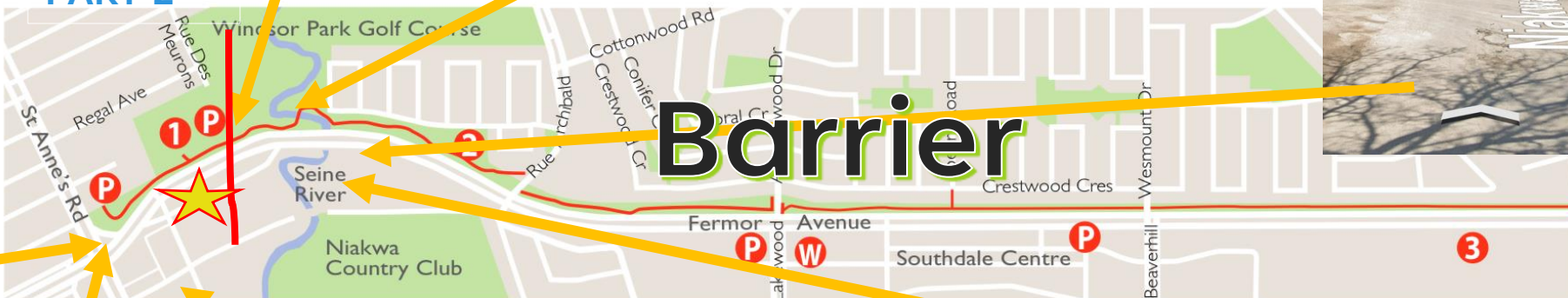
Bridge needs some lips ground down



Shoulders should be widened on such a popular cycling route. No room for a cyclist with traffic.

Sidewalk along Niakwa Road needs repairs. Intersection also needs crossing Lane painted as well as stop lines.

Niakwa Trail - 4.1 km PART 2



Barrier



Curbing -
Unknowingly
Installed as a
Barrier

Tree pruning
and sand
cleanup
req'd in this
area



Blind corner-shrubs
need maintenance



Approach to bridge
is too steep - needs
grading. Also, posts
too tight



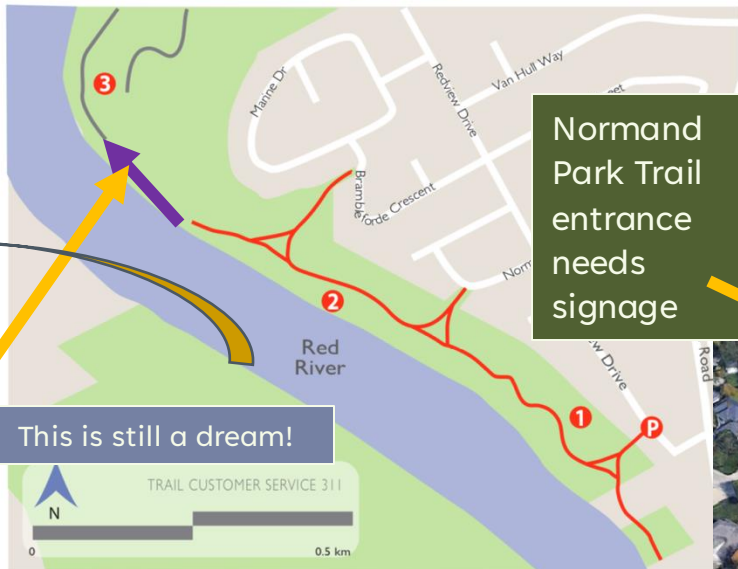


Henteleff Park - Opportunity exists for rivers edge Trail to be developed

Henteleff section could use some grading improvements.



Normand Park Trail - 0.8 km



Normand Park Trail entrance needs signage

To Burland Park - sidewalks need widening

This is still a dream!

Legend

- trail route
- other trails
- park / open space
- P parking

Points of Interest

- 1 Play structure
- 2 Riverbank restoration
- 3 Henteleff Park

Univ of MB



The trail has been completed connecting Normand Park with Van Hull and Henteleff Parks

Complete accessible loop by widening some Aldgate Rd etc sidewalks and marking & signing some bike lanes on these streets.



Great news - huge CreekBend riverside property sold, new owners having connector trail built



Normand Park Trail - 0.8 km

Area residents make heavy use of this carefully landscaped pathway that snakes along the banks of the Red River. The trail was designed in line with the city's new policy of preserving river banks for recreation. The Normand Park Residents Association and Winnipeg Parks worked together to build a walking and cycling path through existing native river forest vegetation with native grasses and flowers planted in the open areas of this 6 hectare linear parkway.

This trail system is one of Winnipeg's well kept secrets. It offers spectacular views of the Red River and is home to an interesting variety of birds and animals.

Fast Facts

- Crushed limestone surfacing
- 0.8 km route length
- Parking
 - o South end of Redview Drive

Points of Interest

- 1 **Play structure** - A popular children's play structure is located in the south end of the park, adjacent to the trail.
- 2 **Riverbank restoration** - At the west end of Norman Park, you will find new tree plantings as well as pockets of pristine river bottom forest.
- 3 **Henteleff Park** - A 16 hectare passive park on the banks of the Red River. Currently there is no trail linking Normand and Henteleff Park.



The Winnipeg Foundation, a contributor to the quality of life in our community since 1921.

Red River Cooperative Ltd. is a proud supporter of Winnipeg trails. A Manitoba organization owned and controlled by its members, Red River Co-op is committed to working for the sustainable development of the communities it serves. www.rccoop.com

Additional information on Winnipeg trails and the Trans Canada Trail: www.WinnipegTrails.com or 'Winnipeg Walks' by The Prairie Pathfinders, a Canadian best selling guide highlighting 38 walks in Winnipeg and surrounding parks - www.PrairiePathfinders.mb.ca

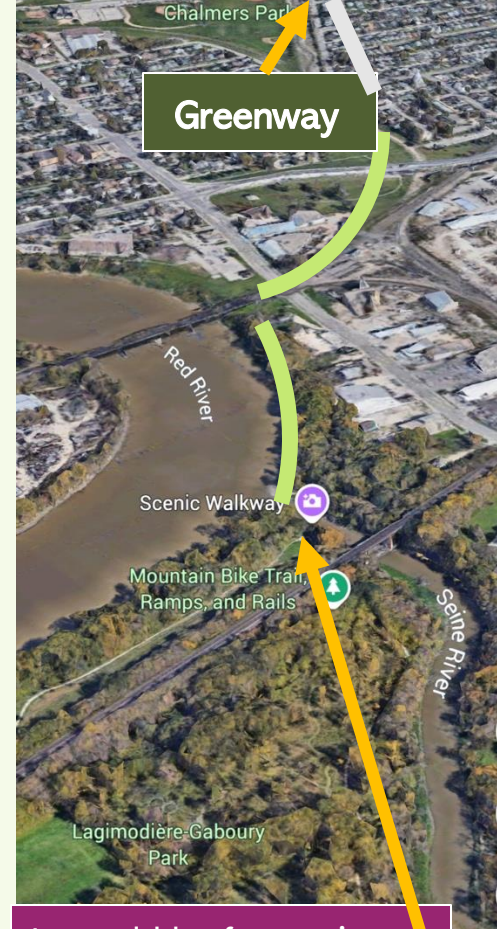


Henteleff Park



South St Vital Trail





Greenway

Scenic Walkway

Mountain Bike Trail,
Ramps, and Rails

Lagimodière Gaboury
Park

Northeast Pioneers Greenway - 5.5 km

Signage needed here showing
way to Bunns Creek pathway.

Sidewalk
could get
changed to
the width of
the crosswalk

Gateway and Talbot -
Could paint trail
crosswalks the same we
do for school crossings

This is at the
perimeter highway.
Should have a bench
and maybe some
signage giving info
about the trails -
both the one coming
so much back into
the city and the one
going north to
Birdshill Park.



Legend

- trail route
- other trails
- Trans Canada Trail
- P parking
- W washroom / refreshments

Points of Interest

- 1 Centennial Park
- 2 Trans Canada Trail
- 3 Michael Hrushovetz Park
- 4 Bunn's Creek Trail



This is what a
bridge could look
like at the mouth
of the Seine River

Greenway

Shown is
proposing the
Archibald St
pedestrian
bridge
connecting to
the Greenway

Make trail
under old train
bridge



Northeast Pioneers Greenway - 5.5 km

The Northeast Pioneers Greenway officially opened in 2007. The Greenway connects multiple communities in Northeast Winnipeg and to the Forks via a bike route. It is being embraced by the communities as both a recreation and transportation corridor. The asphalt trail, built on the former Marconi Spur rail line will be extended to Knowles Ave. in 2010. The Marconi Spur was constructed by the Dominion Government in 1878 and turned over to the Canadian Pacific Railway in 1881 as part of the main line between Rat Portage (presently Kenora) and Winnipeg. Today, area residents and the City of Winnipeg are partnering to install benches, shade canopies, interpretive signage, etc. The greenway connects to The Forks National Historic Site via the bike route on Riverton Avenue. Many people envision the trail connecting to Birds Hill Provincial Park in the future.

Fast Facts

- **Asphalt surfacing**
- **5.5 km Distance markers installed**
- **Parking**
 - Chalmers Community Centre - 480 Chalmers Ave
 - Centennial Park - 800 Raleigh Ave
 - Gateway Recreation Centre - 1717 Gateway Rd
- **Washroom / Convenience Store**
 - Red River Co-op - 1138 Gateway Rd
 - Tim Horton's - 1139 Gateway Rd

Points of Interest

- 1 **Centennial Park** - Local residents united to save a large grove of oak trees from a housing development and the area was turned into Centennial Park.
- 2 **Trans Canada Trail** - This section of Trans Canada Trail currently follows sidewalks and city streets. Plans are underway to install a multi-use pathway in 2012.
- 3 **Michael Hrushovetz Park** - This small urban forest was donated to the City of Winnipeg by the Hrushovetz family, who were local market garden pioneers. This natural habitat had been owned by the family since 1925.
- 4 **Bunn's Creek Trail** - Bunn's Creek Trail, part of the Trans Canada Trail, weaves through a quiet residential neighbourhood situated alongside Bunn's Creek.

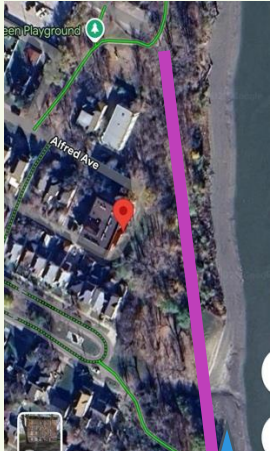
The Winnipeg Foundation, a contributor to the quality of life in our community since 1921.

Red River Cooperative Ltd. is a proud supporter of Winnipeg trails. A Manitoba organization owned and controlled by its members. Red River Co-op is committed to working for the sustainable development of the communities it serves. www.rcoop.com

Additional information on Winnipeg trails and the Trans Canada Trail: www.WinnipegTrails.com or "Winnipeg Walks" by The Prairie Pathfinders, a Canadian best selling guide highlighting 38 walks in Winnipeg and surrounding parks - www.PrairiePathfinders.mb.ca



North Winnipeg Parkway

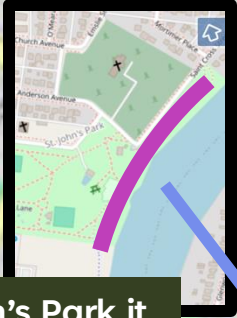


May not be worthwhile to build a riverside trail in this case

At St. John's Park it would be nice to have a pathway without so many twists and turns

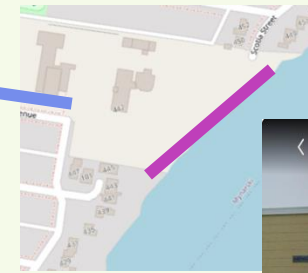


Annabella Street needs signage at both ends to make trail connection user friendly. Also, the posts could be further apart to allow adaptive cycles passage.



This trail completion under the bridge should happen soon

Add some signage for the Henderson Bridge turn off



Not sure if this school would ever allow easement for the city to build a path along the river



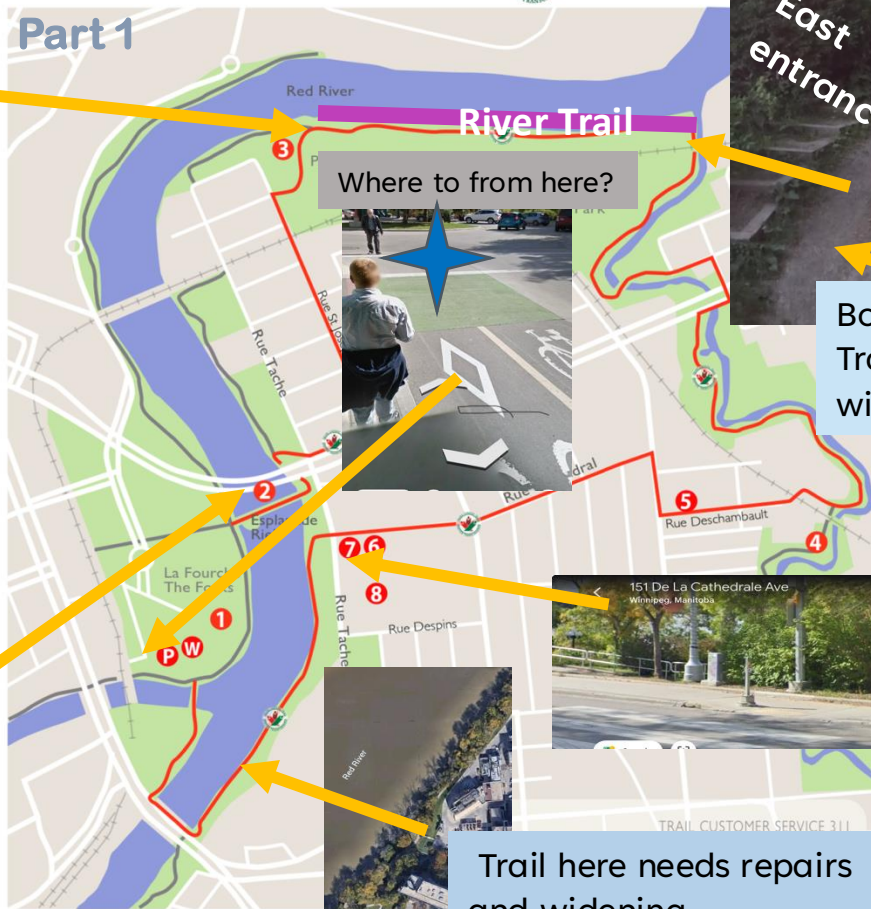
End of Rover Dike - Need to make sure the gates allow passage of adaptive cycles and hand cycles.



Old St Boniface Route - 8.4 km



Part 1



West entrance

Proposing to make both Whittier riverside trail entrances accessible.

East entrance

Both entrances for the riverside Trail could be made accessible with a crew using shovels.

Bridge needs approaches assessed

Cathedral Crossing has turns that are too tight for adaptive cycles

Trail here needs repairs and widening

Legend

- trail route
- other trails
- Trans Canada Trail
- park / open space
- P parking
- W washroom / refreshments

Points of Interest

- | | |
|--|--|
| 1 The Forks | 7 Louis Riel grave site |
| 2 Esplanade Riel | 8 St Boniface Museum |
| 3 Fort Gibraltar | |
| 4 Seine River Trail? | |
| 5 Gabrielle Roy House | |
| 6 St Boniface Cathedral | |

Old St Boniface Route - 8.4 km



This trail winds through St Boniface, the heart of French speaking Winnipeg and the largest francophone community in Western Canada. Established by the Roman Catholic Church in 1818, this area is home to many people who are themselves the descendants of the earliest French settlers. Old St Boniface revels in French Canadian culture which is still strong here. It is visible on street signs and audible in local shops and banks. As you stroll along St. Boniface's heavily treed streets you'll spot the names of many historical figures, such as religious leaders Provencher and Taché, and fur trader La Vérendrye. And while St. Boniface is rooted in history, it continues to grow. The new Esplanade Riel has encouraged greater discovery of the area, and several new businesses have already opened near the bridge, including a romantic restaurant and a gelateria.

Fast Facts

- asphalt surface
- 8.4 km route length
- Parking
 - The Forks

Points of Interest

- 1 **The Forks** - A meeting place for thousands of years, this is the city's most popular gathering place, attracting nearly four million visitors each year.
- 2 **Esplanade Riel** - This eye-catching pedestrian walkway parallels the Provencher Bridge and connects downtown Winnipeg to St. Boniface.
- 3 **Fort Gibraltar** - This replica of the North West Company fur trading post commemorates the early history of Western Canada when fur-trading was the main industry.
- 4 **Seine River Trail** - This crushed limestone trail is a natural recreational space for passive activities like walking and birding or canoeing, cycling, and x-country skiing. It is also a wonderful habitat to flora and fauna, and an outdoor classroom for nature and local history.
- 5 **Gabrielle Roy House** - 375 Rue Deschambault, the childhood home of one of Canada's most distinguished writers is now open to the public.
- 6 **St Boniface Cathedral** - 190 Cathedral Avenue. The Basilica built in 1908 was destroyed by fire in 1968. The present structure, designed by world famous architect Etienne Gaboury, incorporates the remaining Romanesque facade.
- 7 **Louis Riel grave site**
- 8 **St Boniface Museum** - Built in 1846, this is the largest oak log building in North America.

The Winnipeg Foundation, a contributor to the quality of life in our community since 1921.

Red River Cooperative Ltd. is a proud supporter of Winnipeg trails. A Manitoba organization owned and controlled by its members, Red River Co-op is committed to working for the sustainable development of the communities it serves. www.rccoop.com

Additional information on Winnipeg trails and the Trans Canada Trail: www.WinnipegTrails.com or 'Winnipeg Walks' by The Prairie Pathfinders, a Canadian best selling guide, highlighting 38 walks in Winnipeg and surrounding parks - www.PrairiePathfinders.mb.ca



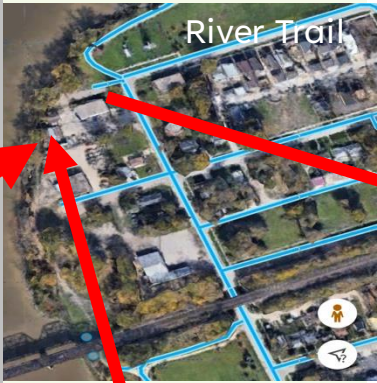
This route has the potential to be a complete gem for Winnipeg, enhanced by being connected to The Forks and crossing three different rivers

This forks cycling entrance needs to have clearly marked signage and paths of where to go.

This switchback approach works great for a wheelchair but the corners are too tight for some adaptive cycles.



Two properties not owned by city are barriers to making this a complete great loop. The one business has pushed a storage bin across the trail claiming there's too many vagrants passing by - we could propose building him better fence with lighting and cameras & perhaps some flower boxes. If we can make this trail, nice and well used then the vagrants will move on, hopefully.



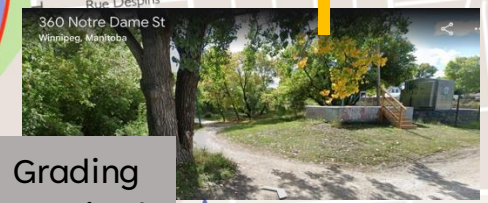
This entrance to The Forks is too steep and needs switchbacking - also needs level resting areas. Grade should be 5% to make it accessible. Also, the repairs to the old train bridge to The Forks should be expedited.



Old St Boniface Route - 8.4 km

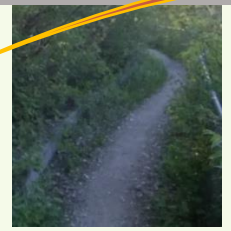


resurfacing required to enable travel with wheelchair.



Grading required

There is a fair amount of trail work needed in these areas. Some slope and cross slope issues but mainly brush clearing and trail widening



This crosswalk needs to be marked & signed properly

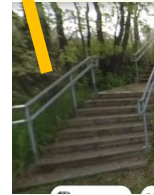


Trail access could begin at this point

Should plant some trees in this area.



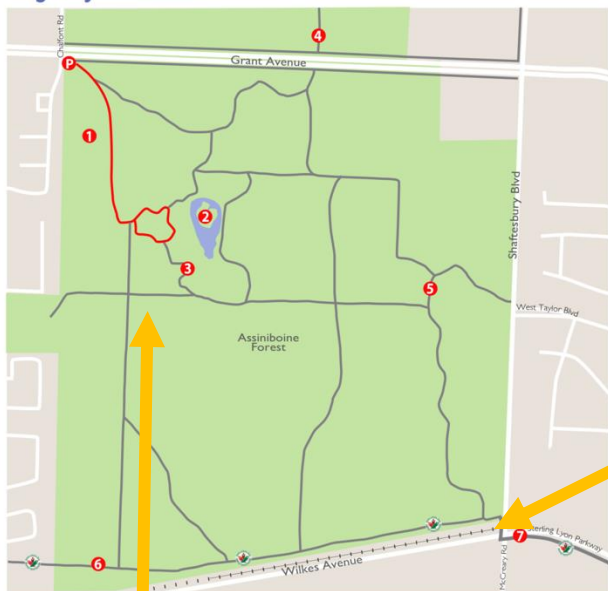
This access point is not accessible for wheelchairs



Trailhead parking - Branch trim to allow cars to park properly & needs cleanup to look more inviting.



Sagimay Trail - 0.9 km



Legend

- trail route
- other trails
- Trans Canada Trail
- park / open space
- P parking

Points of Interest

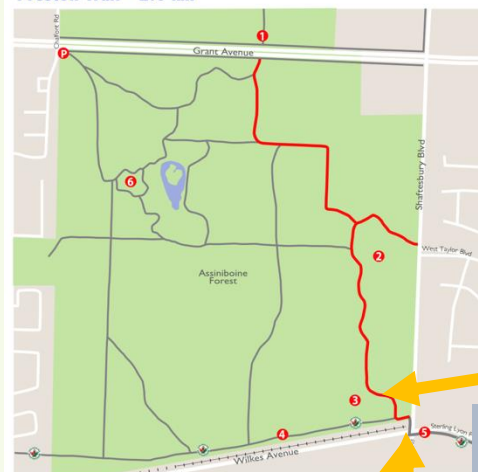
- 1 Prairie Meadow
- 2 Eve Werier Memorial Pond
- 3 Charleswood Rotary Boardwalk
- 4 Trail to Assiniboine Park
- 5 Preston Trail
- 6 Harte Trail
- 7 Thundering Bison Trail



Trail entrance here could use some more inviting signage.



Preston Trail - 2.0 km



Legend

- trail route
- other trails
- Trans Canada Trail
- park / open space
- P parking

Points of Interest

- 1 Trail to Assiniboine Park
- 2 Wetland
- 3 Tall Grass Prairie Restoration site
- 4 Harte Trail
- 5 Thundering Bison Trail
- 6 Sagimay Trail

At this popular trailhead might be nice to have a bench as well as we could plant some trees in the open areas

Preston Trail - 2.0 km

The Preston Trail is located within Assiniboine Forest, Canada's largest 280 hectare urban nature park. This new granular trail is very popular with walkers, cyclists and joggers. Many bark chip trails extend from the Preston Trail enabling further exploration of the forest. Along the north portion, the Preston Trail winds through aspen and oak habitat, where smaller numbers of Balsam Poplar are also present. Midway along the trail, an observation mound provides great views of a recently constructed wetland, while the mound itself contains examples of native tall grass prairie plant species. At the south end of the trail, visitors will encounter an 3 hectare section of restored tall grass prairie. Named after the Preston family that once resided where Assiniboine Forest is now, the trail has been designed to minimize ecological impacts, while providing an interesting and scenic route through this natural heritage area.

Fast Facts

- crushed limestone surface
- 2.0 km route length
- Parking
 - Assiniboine Forest main entrance parking lot on Grant Avenue at Chaffont Rd.

Points of Interest

- 1 **Trail to Assiniboine Park** - This asphalt pathway continues on to Assiniboine Park, Assiniboine Zoo and other area features.
- 2 **Wetland** - The new wetland was constructed in 2005 as part of a drainage and wetland enhancement project to alleviate drainage challenges in Assiniboine Forest.
- 3 **Tall Grass Prairie Restoration site** - Formerly a landfill, this 3 hectare site was restored to tall grass prairie in 2004. The mound on the site provides a scenic view of the area.
- 4 **Harte Trail** - Built on a unused rail bed, the 6.5 km Harte Trail is part of the Trans Canada Trail system.
- 5 **Thundering Bison Trail** - provides a key link to FortWhyte Alive nature centre.
- 6 **Sagimay Trail** - This trail leads into Assiniboine Forest from the main entrance parking lot.

The Winnipeg Foundation, a contributor to the quality of life in our community since 1921.

Red River Cooperative Ltd. is a proud supporter of Winnipeg trails. A Manitoba organization owned and controlled by its members. Red River Coop is committed to working for the sustainable development of the communities it serves. www.rccoop.com

Additional information on Winnipeg trails and the Trans Canada Trail www.WinnipegTrails.com or "Winnipeg Walks" by The Prairie Pathfinders, a Canadian best selling guide highlighting 38 walks in Winnipeg and surrounding parks - www.PrairiePathfinders.mb.ca



The turning radius is too sharp for some adaptive cycles and hand cycles at this crosswalk Junction



To approve safety these crosswalks should have stop lines and crossing lanes painted

Sagimay – asphalt
Preston – hard packed gravel
Side trails – a fairly well packed bark mulch, maybe suitable for some wheelchairs and scooters.

Sagimay Trail - 0.9 km

The Sagimay Trail was constructed in 1981, and its name originates from the Cree word meaning mosquito, however, a walk along the Sagimay Trail provides an opportunity to observe many types of wildlife including birds, deer and other small mammals. During the spring, the trail comes alive with the songs of migratory birds. At the southeast end of the trail, an observation mound overlooks the Eve Werier Memorial Pond – a perfect place to look for waterfowl and other wetland creatures. The Sagimay Trail also offers up linkages to 6 km of wood-chipped trails in Assiniboine Forest, which in turn provide access to the new crushed limestone Preston Trail and the Harte Trail that runs along the south edge of the Forest.

Fast Facts

- asphalt surface
- 0.9 km route length
- Parking
 - Assiniboine Forest main entrance parking lot on Grant Avenue at Chaffont Rd.

Points of Interest

- 1 **Prairie meadow** - This large meadow provides an example of prairie habitat, including tall grass prairie species such as Big Bluestem and Prairie Sage.
- 2 **Eve Werier Pond** - This pond supplies water for wild life and waterfowl, and with this water source, deer can be saved from crossing busy streets to reach the Assiniboine River. Early mornings or at dusk you may come upon deer drinking at water's edge or see a flock of ducks feeding on wetland plants.
- 3 **Charleswood Rotary Boardwalk** - constructed by the Charleswood Rotary Club in 2002.
- 4 **Trail to Assiniboine Park** - This asphalt pathway continues on to Assiniboine Park, Assiniboine Zoo and other area features.
- 5 **Preston Trail** - Named after the Preston family that once resided where Assiniboine Forest is now, the trail has been designed to minimize ecological impacts, while providing an interesting and scenic route through this natural heritage area.
- 6 **Harte Trail** - Built on a unused rail bed, the 6.5 km Harte Trail is part of the Trans Canada Trail system.
- 7 **Thundering Bison Trail** - provides a key link to FortWhyte Alive nature centre.

The Winnipeg Foundation, a contributor to the quality of life in our community since 1921.

Red River Cooperative Ltd. is a proud supporter of Winnipeg trails. A Manitoba organization owned and controlled by its members. Red River Coop is committed to working for the sustainable development of the communities it serves. www.rccoop.com

Additional information on Winnipeg trails and the Trans Canada Trail www.WinnipegTrails.com or "Winnipeg Walks" by The Prairie Pathfinders, a Canadian best selling guide highlighting 38 walks in Winnipeg and surrounding parks - www.PrairiePathfinders.mb.ca



St Norbert Heritage Trails - 9 km



The Kilkenny Rd Trail connection to Kings Park, U of M, and beyond could be improved by adding a wide sidewalk to the full length of Kilkenny. (Also it is part of TCT)



This crossing underneath the perimeter overpass needs to be safer. There should be a proper crosswalk painted on the road. The road sand needs to be removed off the trail surface and there should be better signage both north and south.

Legend

- trail route
- other trails
- Trans Canada Trail
- park / open space
- P parking
- W washroom / refreshments

Points of Interest

- 1 Sentier Cloutier Trail
- 2 St. Norbert Farmers Market
- 3 Dike Foot Trail
- 4 Pollock Island Park
- 5 Trappist Monastery Provincial Heritage Park
- 6 St Norbert Provincial Heritage Park & Tourism Centre
- 7 future Duff Roblin Provincial Park

Entrance to Pollock Island



Crosswalk and stop line need to be painted



Could build a bridge from Pollock Island to Saint Norbert Prov Heritage Park. Would add an amazing section of river Trail!



St Norbert Heritage Trails - 9.0 km



The St. Norbert Heritage Trails (SNHT), are a series of multi-use pathways and sidewalks on quiet residential streets with a spur trail following the primary dike system. The trails cover approximately 9 km and weave through the rich cultural heritage of the community of St. Norbert. The SNHT is part of the Trans Canada Trail, the longest trail system in the world with boundaries marked by Cloutier Drive to the north and the Red River Floodway channel to the south.

St. Norbert is the entrance to Winnipeg, the birthplace of the province, and home of the Red River Floodway gates. This is a unique community with a storied history that includes a past life as a vital trading centre, the starting point for annual buffalo hunts, and a transportation hub beginning in the early 1800s. Named in honour of Norbert Provencher, the first bishop of St. Boniface, St. Norbert has evolved into a picturesque residential suburb that maintains its links to an intriguing history.

Fast Facts

- crushed limestone, asphalt & concrete sidewalk surfaces
- 9 km route length
- Parking
 - St Norbert Community Centre, 3450 Pembina Hwy
 - St Norbert Provincial Heritage Park, 40 Turnbull Drive
 - along local streets
- Washrooms / Convenience Store
 - Red River Co-op - 3455 Pembina Hwy

Points of Interest

- 1 **Sentier Cloutier Trail** - A 2 km multi use asphalt trail
- 2 **St Norbert Farmers Market** - Manitoba's largest outdoor summer market
- 3 **Dike Foot Trail** - Follows the St. Norbert's primary dike
- 4 **Pollock Island** - 6 hectare city park with multiple foot trails
- 5 **Trappist Monastery Provincial Heritage Park** - Home to the Trappist Monastery Ruins.
- 6 **St Norbert Provincial Heritage Park & Tourism Centre**
- 7 **Duff Roblin Provincial Park** - Future park and home to the Red River Floodway gates.

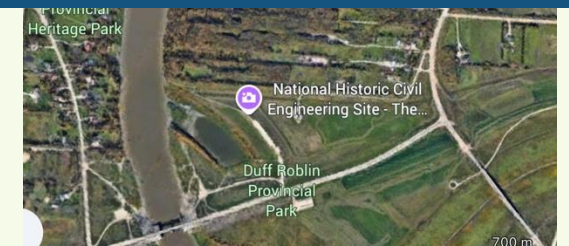
The Winnipeg Foundation, a contributor to the quality of life in our community since 1921.

Red River Cooperative Ltd. is a proud supporter of Winnipeg trails. A Manitoba organization owned and controlled by its members, Red River Co-op is committed to working for the sustainable development of the communities it serves. www.rcoop.com

Additional information on Winnipeg trails and the Trans Canada Trail: www.WinnipegTrails.com or "Winnipeg Walks" by The Prairie Pathfinders, a Canadian best selling guide highlighting 38 walks in Winnipeg and surrounding parks - www.PrairiePathfinders.mb.ca



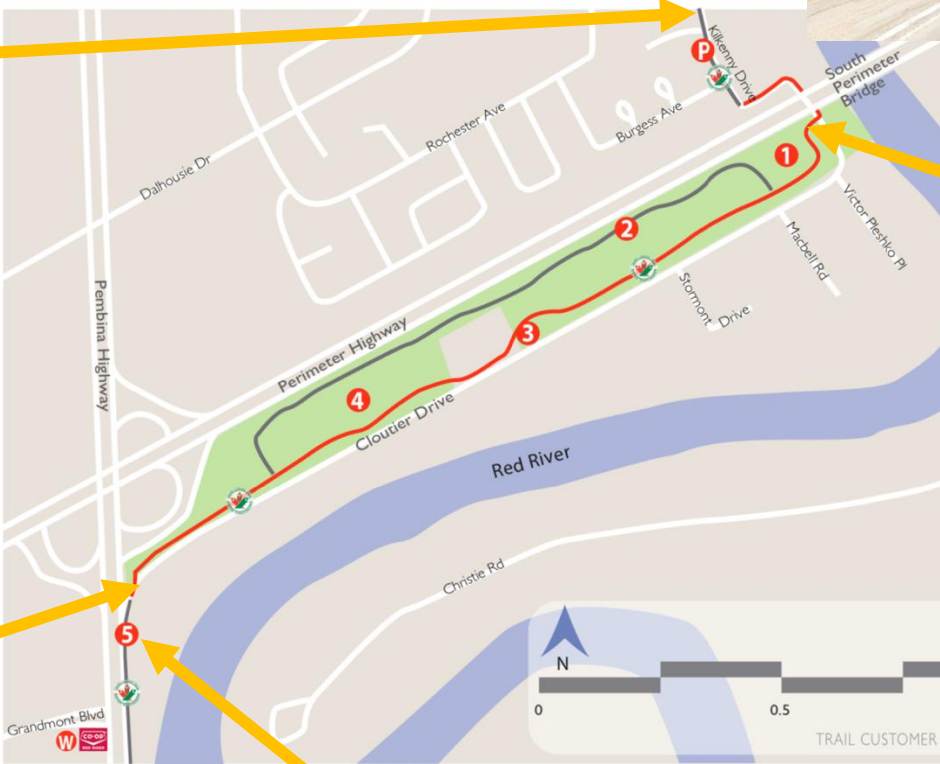
Signage would be helpful, indicating how to get to Duff Robin Park, D.R.Trail, etc.



Kilkenny Road should have a nice wide sidewalk installed. This would benefit not only adaptive cyclist and allow the trans can trail here to become accessible but also all the use of them students would also benefit.



Sentier Cloutier Trail - 2.0 km



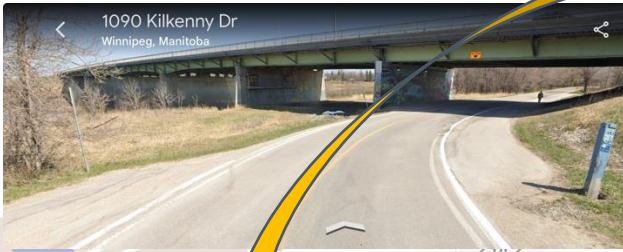
Legend

- trail route
- other trails
- Trans Canada Trail
- parking
- washroom / refreshments

Points of Interest

- 1 Riverbottom Forest
- 2 Bark Chip Trail
- 3 Trans Canada Trail Kiosk
- 4 Mature Tree Nursery
- 5 St Norbert Heritage Trails

A stop line and a crosswalk should be painted on the intersection here as well as signage



The trail crossing here should have the turns made wider so adaptive cycles would be able to see oncoming traffic. Also, there should be crosswalk painted as well as the sand cleaned up.



Sentier Cloutier Trail - 2 km



Sentier Cloutier Trail, part of the Trans Canada Trail system and the St. Norbert Heritage Trails, is located on a forty four acre provincially owned property in south Winnipeg. The trail is on land protected from development and the area contains four of Manitoba's habitats: river bottom forest, open tall grass prairie, oak and aspen forests and a wetlands area. Along with the native habitat, there are two mature tree nurseries located on the property containing countless varieties of native and non native plant species – many which are fruit bearing. Traveling along Sentier Cloutier Trail, you will see many birds and animals whose homes are hidden in the habitat. The trail was built in 2003 by local area volunteers and is named after a prominent St. Norbert pioneer family. Sentier Cloutier Trail is a key connection for the communities of Fort Garry and St. Norbert.

Fast Facts

- Asphalt surfacing
- 2 km Distance markers installed
- Parking
 - Street parking on Kilkenny Drive
- Washrooms / Convenience Store
 - Red River Co-op - 3455 Pembina Hwy

Points of Interest

- 1 Riverbottom Forest - Pristine 'Type A' grade riverbottom forest, virtually untouched by man. This site provided excellent habitat for a number of species including white-tailed jack rabbits, squirrels and white-tailed deer. The site is also a good resting and feeding location for migrating birds using the Red River Flyway.
- 2 Bark Chip Trail - An informal trail often used by area residents to walk their dogs. Exceptional fruit and berry tree canopy over sections of the trail.
- 3 Trans Canada Trail Kiosk - Showing the route of the Trans Canada Trail in Winnipeg and local community events.
- 4 Mature Tree Nursery - Observe the linear rows of trees. Trees from this nursery were supplied to the Legislative grounds. Now the nursery is home to many species of birds and wildlife.
- 5 St Norbert Heritage Trails - Part of the Trans Canada Trail system, this historic trail weaves into the community of St. Norbert and highlights the areas' habitat and historical sites.

The Winnipeg Foundation, a contributor to the quality of life in our community since 1921.

Red River Cooperative Ltd. is a proud supporter of Winnipeg trails. A Manitoba organization owned and controlled by its members, Red River Co-op is committed to working for the sustainable development of the communities it serves. www.rccoop.com

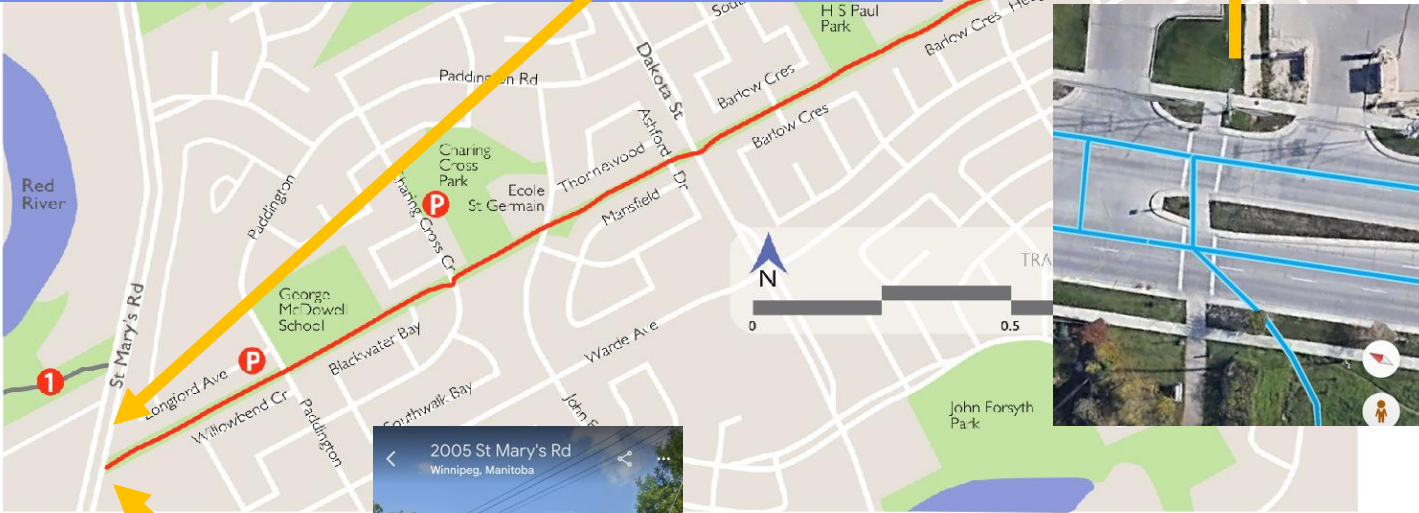
Additional information on Winnipeg trails and the Trans Canada Trail: www.WinnipegTrails.com or "Winnipeg Walks" by The Prairie Pathfinders, a Canadian best selling guide highlighting 38 walks in Winnipeg and surrounding parks www.PrairiePathfinders.mb.ca



South St Vital Trail - 2.6 km

This crossing should have a better connection between the trail and the crosswalk to allow adaptive cycles to make the turns. Also improving the signage and marking the Hydro cables better recommended.

The crossing on the east side of Saint Anne's Road could be made more accessible for adaptive cycles, scooters, etc. by improving the alignment of the sidewalk with extra concrete.



Legend

- trail route
- other trails
- park / open space
- P parking
- W washroom / refreshments



Point of Interest

- 1 Henteleff Park



South St Vital Trail - 2.6 km

Stretching from St Mary's Rd to St Anne's Rd, this trail connects St Vital suburbs from west to east and is used primarily as a commuter route by surrounding neighbourhoods. Expect to see lots of children along the route as it provides safe access to green space and schools. Aside from the nicely landscaped residential yards and gardens bordering the trail, you'll find an interesting variety of plantings along the corridor itself. Look for some beautiful Golden willow, Ontario maple, and Schubert chokecherry. In early spring the wonderful Hawthorne blossoms make this pathway particularly scenic.

Fast Facts

- Asphalt surfacing
- 2.6 km Distance markers installed
- Parking
 - o neighbourhood streets and parks
- Washrooms / Refreshments
 - o Dakota Community Centre, 1188 Dakota Street

Points of Interest

- 1 Henteleff Park - Once home to the Henteleff family market gardens, this land also served as the City's tree nursery for a number of years. Today you can see the many linear rows of mature native and ornamental tree species. Henteleff Park is now a set up for passive (low impact) recreational use. Collaborative efforts by the Henteleff Park Foundation and the City of Winnipeg are underway to restore the riparian habitats along the Red River and Normand Creek and improve the area for wildlife. Wood chip trails, benches and interpretive signage enhance the enjoyment of park users.



The Winnipeg Foundation, a contributor to the quality of life in our community since 1921.

Red River Cooperative Ltd. is a proud supporter of Winnipeg trails. A Manitoba organization owned and controlled by its members. Red River Co-op is committed to working for the sustainable development of the communities it serves. www.rccoop.com

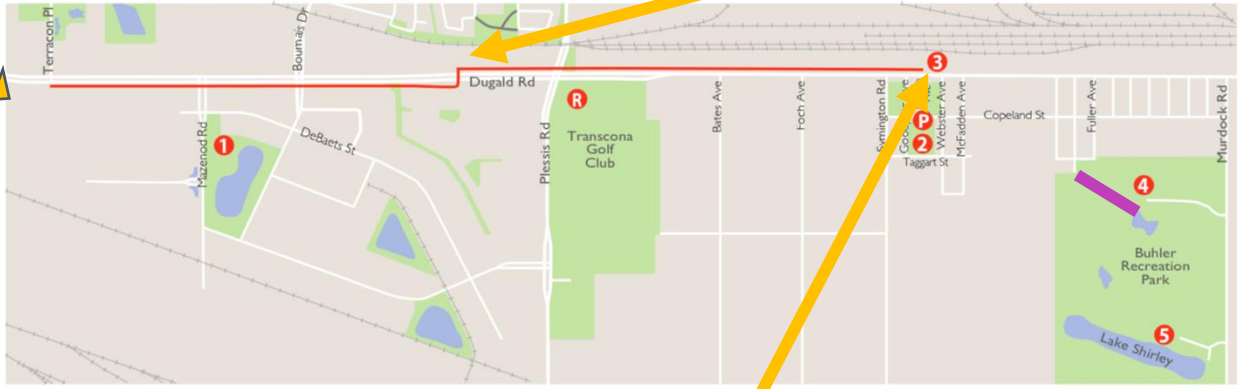
Additional information on Winnipeg trails and the Trans Canada Trail: www.WinnipegTrails.com or 'Winnipeg Walks' by The Prairie Pathfinders, a Canadian best selling guide highlighting 38 walks in Winnipeg and surrounding parks - www.PrairiePathfinders.mb.ca



Developing this section of trail would connect the Transcona Trail with the South Transcona Community Path.

Should paint crosswalk markings as well as put up crosswalk signs here

South Transcona Community Path - 4.2 km



- Legend**
- trail route
 - other trails
 - park / open space
 - P parking
 - R refreshments

- Points of Interest**
- 1 Mazenod off leash dog park
 - 2 South Transcona
 - 3 Malting Plant
 - 4 Buhler Recreation Park
 - 5 Lake Shirley, Provincial Water Ski Park

If this short section of trail was developed a little further, it would connect with the trail that goes to the Buhler Recreation Park

Crosswalk markings would be good here as well as crosswalk signs

Add signage at intersections to show trail users how to get to South Transcona Park and Buhler Recreation Centre



South Transcona Community Path - 4.2 km

The South Transcona Community Path provides a fully separated walking and cycling path along Dugald Rd, a high-volume, high speed provincial highway. It runs from the intersection of Terracon Pl and Dugald Road out to the suburb of South Transcona. Residents of South Transcona used to walk through the CNR shops to get to downtown Transcona on a pathway known as 'The Midway'. When CNR closed that pathway there was no safe way to walk or cycle between South Transcona and the rest of Transcona. This paved path has been constructed to provide a safe commuter path and is enjoyed best on a bike.

Fast Facts

- 3.5 m wide asphalt surface west of Plessis, 2 m wide asphalt surface east of Plessis
- 4.2 km route length
- Parking
 - On Borden Avenue off Dugald Road

Points of Interest

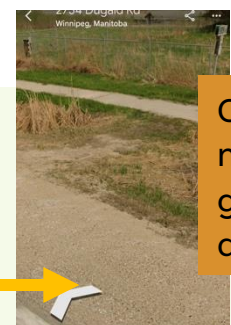
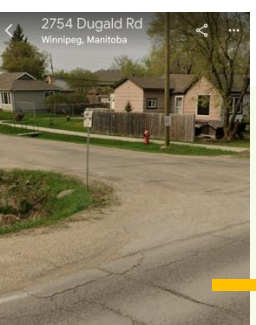
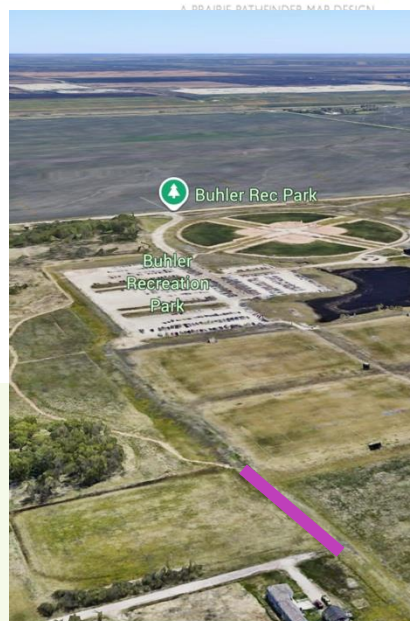
- Mazenod off leash dog park** - This unfenced, off-leash area is located in the St Boniface Industrial Park and consists of the area surrounding the retention pond.
- South Transcona** - South Transcona has a gas station, restaurant and community club. It is a small suburb that looks and feels like a small town. The South Transcona Community Path ends in South Transcona but you may continue cycling east approximately 2 kilometres to Murdoch Road. Turn south at Murdoch Road and cycle one kilometre to the Buhler Recreation Park.
- Malting Plant** - Malteurop Malting is one of the largest barley and malting barley producers in the world with an annual production capacity of 90,000 tonnes of Pilsen malt, used by brewers as a base malt, particularly for lagers.
- Buhler Recreation Park** - (135 Murdoch Rd) has ball diamonds available for softball and baseball tournaments; and athletic fields for soccer, flag football, ultimate Frisbee and field lacrosse. It also has 5 km of fitness trails and a canteen that may be open on summer evenings.
- Lake Shirley Water Ski Park** - this man-made lake built for the 1999 Pan American Games is used for water ski events as well as dragon boat races.



The Winnipeg Foundation, a contributor to the quality of life in our community since 1921.

Red River Cooperative Ltd. is a proud supporter of Winnipeg trails. A Manitoba organization owned and controlled by its members, Red River Coop is committed to working for the sustainable development of the communities it serves. www.wmccoop.com

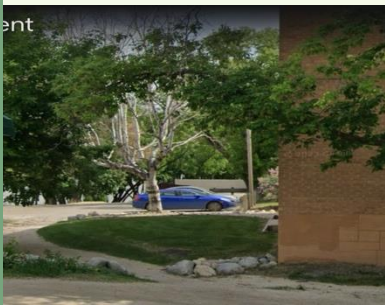
Additional information on Winnipeg trails and the Trans Canada Trail: www.WinnipegTrails.com or "Winnipeg Walks" by The Prairie Pathfinders, a Canadian best selling guide highlighting 38 walks in Winnipeg and surrounding parks - www.PrairiePathfinders.mb.ca





Should add curbing to separate sidewalk from road

Riviera Cres Connector for river Trail- Property manager very concerned about increase in vandalism if passage granted!



South Winnipeg Parkway

Add pathways



Very busy here with golf course and Thermea – needs more parking & new wide multi use pathways

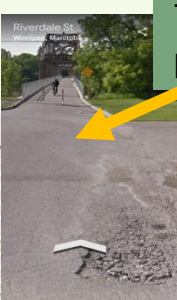
Not safe



Needs repair/resurfacing



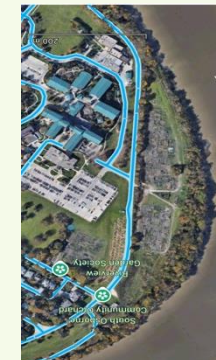
Too tight, only one post needed



Better route signage needed

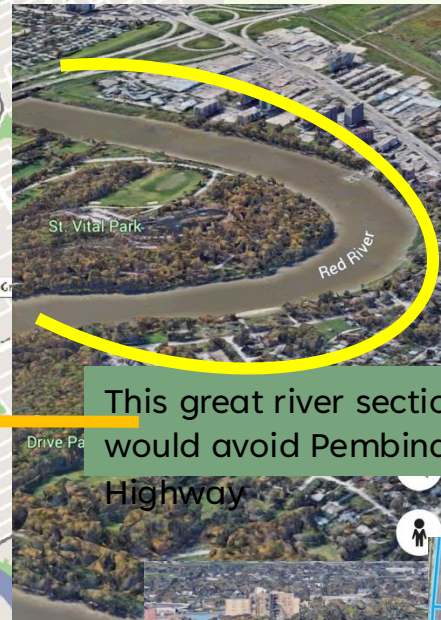


Wildwood GC – future possibility for a great river side trail



Riverview-could develop trail along river here

This great river section Trail would avoid Pembina Highway



Needs slope check



Sturgeon Creek Greenway Trail - 4.0 km

This section of Trail can be unsafe because two straightaways come to a corner with blind spots. This due to branches that need trimming. Also, pathway should be widened here.

Yellow Ribbon Greenway >

Signage & crosswalk, painting required,

Hamilton Dr is a great connector for Sturgeon Creek Greenway and the Yellow Ribbon Greenway. In future sidewalk here could be widened.

Signage required

Could add a bridge here at Saskatchewan Avenue to make this trail a loop

Sturgeon Creek Greenway Trail - 4.0 km

The Sturgeon Creek Greenway Trail runs adjacent to Sturgeon Creek from Woodhaven Park to Saskatchewan Avenue. The trail follows the creek which flows through areas that were once tall grass prairie. The biodiversity of fish species in Sturgeon Creek is quite high, with at least 30 different species identified. Molluscs, crustaceans, amphibians, reptiles, birds and mammals also use the creek as habitat. A trip down this trail showcases the unique natural area and the numerous improvements Sturgeon Creek has seen that benefit its ecological health. In the 1990s, riffles and fish ladders were added to help improve water quality and fish habitat. As well, a "no mow buffer strip" was established to help stabilize the creek banks, benefit wildlife and improve biodiversity.

Fast Facts

- **Asphalt surfacing** with crushed limestone between Woodhaven & Portage Ave and between Hamilton & Saskatchewan Ave. The asphalt trail goes under Portage Ave enabling good connectivity. You must use the sidewalk on Hamilton Ave to connect to trail on Silver Ave.
- **4.0 km Distance markers installed**
- **Parking**
 - Woodhaven Community Centre off Woodhaven Blvd
 - Sturgeon Creek Park - enter off of Booth Drive
 - Vimy Arena - 255 Hamilton Ave
- **Washrooms / Refreshments**
 - Vimy Arena - 255 Hamilton Ave

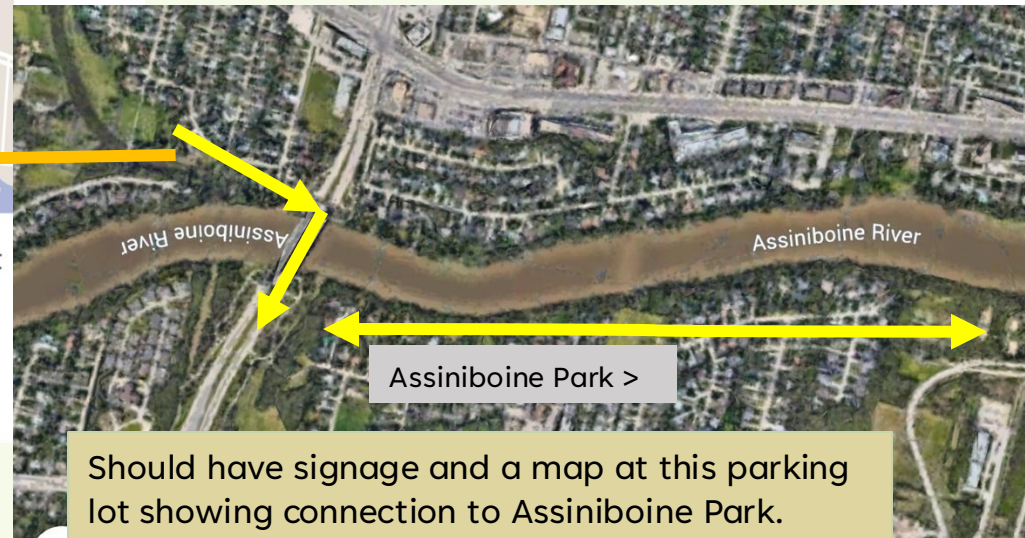
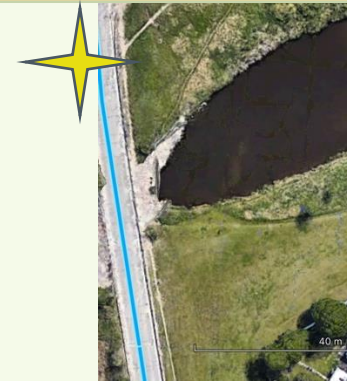
Points of Interest

- 1 **T-33 Plane** - This plane commemorates the Golden Centennaires, an aerobatic team who flew in honour of Winnipeg's Centennial, 1967.
- 2 **Grant's Old Mill** - The mill provides a glimpse of a real working watermill and is open to the public in the spring / summer / fall seasons. It is run by the St. James Assiniboia Pioneer Association 204 986-5613.
- 3 **Fish Ladder** - Located across from Grant's Old Mill, this structure is designed to allow fish to migrate upstream.
- 4 **Fishing Hole** - This popular fishing spot southwest of the Ness Avenue bridge is used by locals throughout the summer months.
- 5 **Tall Grass Prairie** - This endangered eco system contains native grasses and herbaceous plants, e.g. Big Bluestem and Purple Prairie Clover.

The Winnipeg Foundation, a contributor to the quality of life in our community since 1921.

Red River Cooperative Ltd. is a proud supporter of Winnipeg trails. A Manitoba organization owned and controlled by its members. Red River Co-op is committed to working for the sustainable development of the communities it serves. www.rccoop.com

Additional information on Winnipeg trails and the Trans Canada Trail: www.WinnipegTrails.com or "Winnipeg Walks" by The Prairie Pathfinders, a Canadian best selling guide highlighting 38 walks in Winnipeg and surrounding parks www.PrairiePathfinders.mb.ca



Perennial low area with standing water at times should have some asphalt added

Legend

- trail route
- park / open space
- P parking
- W washroom / refreshments

Points of Interest

- 1 T-33 Plane
- 2 Grant's Old Mill
- 3 Fish Ladder
- 4 Fishing Hole
- 5 Tall Grass Prairie

Crosswalk painting required

Should have signage and a map at this parking lot showing connection to Assiniboine Park.



Transcona Trail - 6.7 km

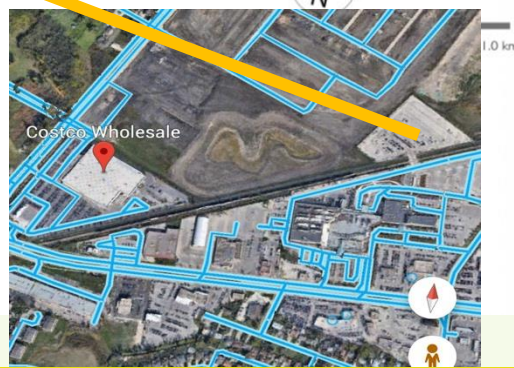


- Legend**
- trail route
 - other trails
 - park / open space
 - P parking
 - W washroom
 - R refreshments
 - B bench
 - CC community club

- Points of Interest**
- 1 Rotary Tall Grass Prairie Nature Park
 - 2 Train Park
 - 3 Off leash dog area
 - 4 Transcona Community Bioreserve
 - 5 Cordite Trail
 - 6 George Olive Park



This is the the west starting point of the trail. Perhaps in the future, some parking could be put in place here.



On map, parking lot is shown over at Costco, but there is no access there, so the arrow shows where parking is available.

Transcona Trail - 6.7 km



The Transcona Trail is an multi-use asphalt path used by walkers, runners and cyclists. It follows a variety of hydro lines along a Manitoba Hydro right of way. The western section of the trail follows the Central Manitoba rail line and is bordered by chain link fence on both sides. It starts at Regent Ave and runs to Ravelston where you'll find the entrance to the Rotary Tall Grass Nature Park at the corner of Ravelston Ave and Bradley St. Along the trail you may find a large variety of birds. You pass through quiet residential neighbourhoods and arrive at open fields.

The Grand Trunk Pacific Railway purchased 800 acres of land east of Winnipeg in 1907 or 1908 for the construction of railway repair shops and a future town site. In 1910 the Transcona post office opened and the town population was 1,600 people. In 1911 the Transcona Board of Trade was established and in 1912 the town of Transcona was officially

incorporated. The Transcona Railway Shops maintained railway cars for the National Transcontinental Railway and the Grand Trunk Pacific Railway. The name Transcona is a combination of "Transcontinental" and "Strathcona". "Transcontinental" is for the CPR transcontinental trains or for the National Transcontinental Railway, plus "Strathcona" is for Lord Strathcona, Donald Alexander Smith, a railway industrialist who headed one of the groups responsible for constructing the Canadian Pacific Railway. In 1913 the Transcona Shops officially opened. In 1961 Transcona had 13,000 citizens and became a city. In 1972 the City of Transcona amalgamated with the city of Winnipeg. Transcona has maintained its small town atmosphere.

Fast Facts

- asphalt surface
- 6.7 km route length
- parking
 - corner of Regent Ave & Peguis St
 - corner of Ravelston Ave & Bradley St
 - Transcona Bioreserve parking lot on Gunn Rd
 - Park City West Community Club @ Hoka Ave

Points of Interest

- 1 **Rotary Tall Grass Nature Park** - This is a rare patch of relatively untouched wet prairie that has never been ploughed. It has 0.7 kilometres of limestone trail.
- 2 **Train Park** - During the late 1920's Canadian National Railways embarked on a programme of home shop locomotive building, and between 1926 and 1931 constructed a total of 72 engines of which 33 were fabricated at Transcona Shops. Locomotive #2747 was the first steam locomotive to be built in western Canada.
- 3 **Off leash dog area** - This section of trail from Plessis Road to Hoka Avenue between the Manitoba Central Railway tracks and well kept backyards, is an off leash dog area. Please clean up after your pets on the trails.
- 4 **Transcona Community Bioreserve** - This former site of an industrial plant has been turned into a naturalized park with more than 1.6 km of crushed limestone trails and a large patch of Big Blue Stem Grass. In the spring it is noisy with frogs. In the summer it is full of colourful wild flowers, butterflies and song birds.
- 5 **Cordite Trail** - is situated in a very open meadow-like field area and runs along the bank of the Cordite Ditch at the northern edge of Transcona.
- 6 **George Olive Park** - This 16 acre nature park named for a former mayor of Transcona, has ponds, waterfowl and its own trails. The area was chosen to be preserved because it is an excellent example of a natural southern Manitoba marsh ecosystem.



The Winnipeg Foundation, a contributor to the quality of life in our community since 1921.



Red River Cooperative Ltd. is a proud supporter of Winnipeg trails. A Manitoba organization owned and controlled by its members, Red River Co-op is committed to working for the sustainable development of the communities it serves. www.rccoop.com

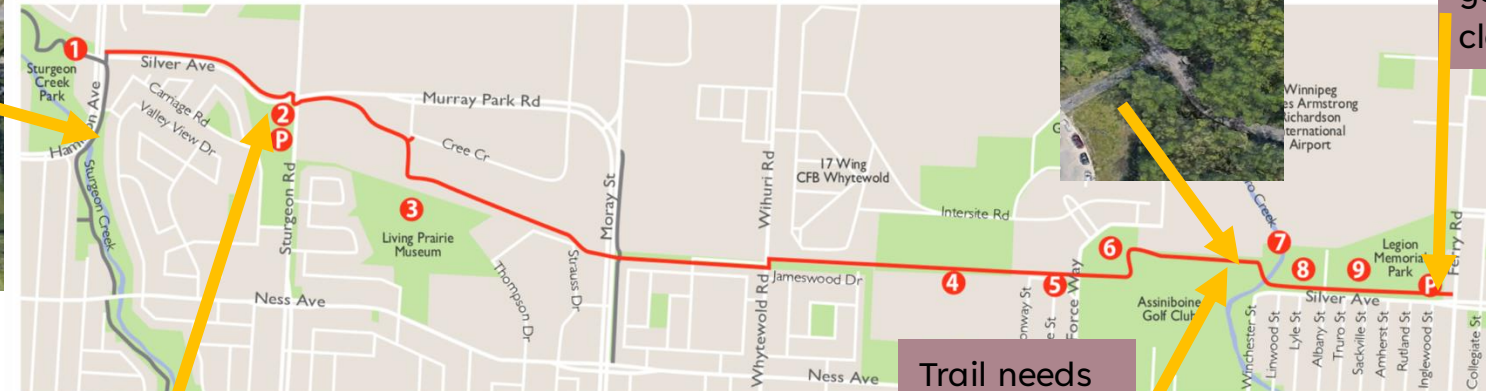


Additional information on Winnipeg trails and the Trans Canada Trail: www.WinnipegTrails.com or "Winnipeg Walks" by The Prairie Pathfinders, a Canadian best selling guide highlighting 38 walks in Winnipeg and surrounding parks - www.PrairiePathfinders.mb.ca



Hamilton Avenue is a great connector to Sturgeon Creek Trail. Could use a wider sidewalk here so cyclists could share the pathway. Also improved signage at the junctions.

Yellow Ribbon Greenway - 5.5 km

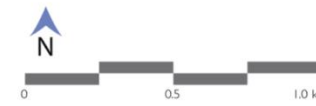


Sturgeon Road – 2 crossings need to be marked

Points of Interest

- 1 Sturgeon Creek Greenway Trail
- 2 Skatepark West
- 3 Living Prairie Museum
- 4 Flight Path Viewing Area
- 5 Play Structure / Picnic Area
- 6 Air Force Heritage Park
- 7 Truro Creek
- 8 St James Horticultural Society Community Gardens
- 9 Legion Memorial Park

Trail needs brush trimming in this area (for safety) to avoid blind spots.



Trail ends here, but there's lack of signage directing trail users where to go. Also, needs to be cleaned up.

Yellow Ribbon Greenway - 5.5 km

This new multi-use pathway named in honor of the Canadian Armed Forces, provides a crucial east west link in Winnipeg's trail network. The westerly end of the Yellow Ribbon Greenway connects into the Sturgeon Creek Greenway Trail system and the easterly end of the trail links to employment areas of the Canadian Forces Base, James Armstrong Richardson International Airport and continues on via on road cycling infrastructure to the Polo Park shopping areas. One of the most captivating aspects of this stretch of trail is the opportunity to stand directly beneath incoming aircraft as they descend onto the runways of the James Armstrong Richardson International Airport.

Fast Facts

- 3.5 m wide asphalt surface
- 5.5 km route length
- Parking
 - Skateboard Park at Silver Ave and Sturgeon Rd
 - Air Force Heritage Park at Air Force Way north of Silver Ave
 - Legion Memorial Park at Silver Ave and Ferry Rd

Points of Interest

- 1 **Sturgeon Creek Greenway Trail** - is a beautifully scenic pathway that follows the creek for 4 km from Woodhaven Park to Saskatchewan Avenue. This trail showcases a unique natural area and the numerous improvements Sturgeon Creek has seen that benefit its ecological health.
- 2 **Skatepark West** - Although one of the city's smaller skateparks, this site has become a favourite for locals, mainly due to its variety of obstacles including a bowl with extension, hips, C-ledge, hubba ledges, many rails, and quarter pipe with cut-out section. The park is located at the corner of Silver Avenue and Sturgeon Road.
- 3 **Living Prairie Museum** - This 30 acre tall grass prairie preserve is home to over 160 species of prairie plants and a great array of wildlife.
- 4 **Flight Path Viewing Area** - Align yourself with the runway navigation lights for a stellar vantage point to watch incoming aircraft descending onto the runways of the James Armstrong Richardson International Airport.
- 5 **Play Structure / Picnic Area** - Located between Moorgate St. and Airforce Way, this is a family friendly area with a play structure and benches - a great location for picnics and watching incoming aircraft!
- 6 **Air Force Heritage Park Museum** - is the largest outdoor park of its kind in Canada and features 13 aircraft tracing the history of military flight.
- 7 **Truro Creek** - This small, but vital tributary of the Assiniboine River is an important site for fish spawning in the spring and provides habitat for ducks, dragonflies, frogs, and fingerling fish.
- 8 **St James Horticultural Society Community Gardens** - has been gardening since WWII. This site is just one of the many community allotment gardens administered by the society.
- 9 **Legion Memorial Park** - a family friendly park area with play structures and benches.

The Winnipeg Foundation, a contributor to the quality of life in our community since 1921.

Red River Cooperative Ltd. is a proud supporter of Winnipeg trails. A Manitoba organization owned and controlled by its members, Red River Co-op is committed to working for the sustainable development of the communities it serves. www.mcoop.com

Additional information on Winnipeg trails and the Trans Canada Trail www.WinnipegTrails.com or "Winnipeg Walks" by The Prairie Pathfinders, a Canadian best selling guide highlighting 38 walks in Winnipeg and surrounding parks - www.PrairiePathfinders.mba.ca



Would be good to have all the crossings marked

